

# vitamin D binding protein antibody



Catalog Number: 116759

## Product name

vitamin D binding protein antibody

IHC: 1:20-1:200

## Specificity

Human, Mouse, Rat; other species not tested.

## Antibody description

vitamin D binding protein Rabbit Polyclonal antibody. Positive WB detected in human blood tissue, mouse eye tissue, mouse testis tissue, PC-3 cells. Positive IHC detected in human liver tissue. Observed molecular weight by Western-blot: 52-58kd

## Preparation

This antibody was obtained by immunization of vitamin D binding protein recombinant protein (Accession Number: NM\_000583). Purification method: Antigen affinity purified.

## Formulation

PBS with 0.02% sodium azide and 50% glycerol pH 7.3.

## Storage

Store at -20°C. DO NOT ALIQUOT

## Clonality

Polyclonal

## Ig Type

Rabbit IgG

## Applications

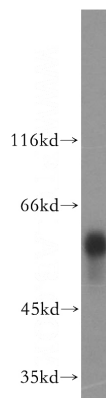
ELISA, WB, IHC

## Dilutions

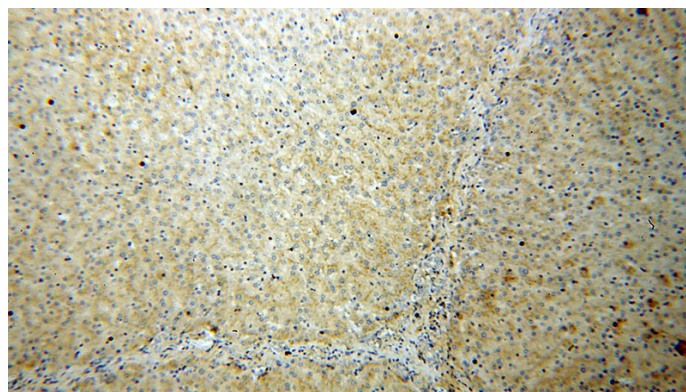
Recommended Dilution:

WB: 1:1000-1:10000

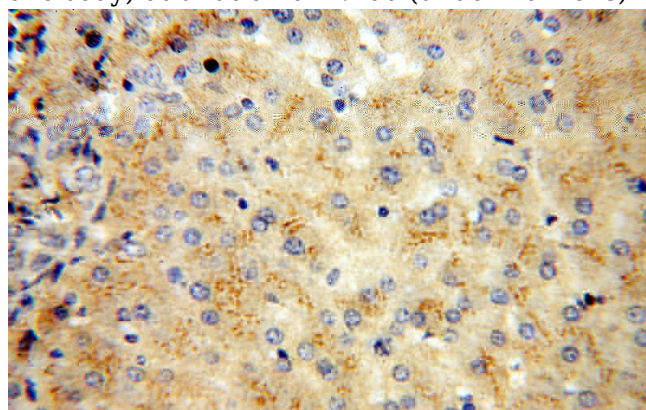
## Validations



human blood tissue were subjected to SDS PAGE followed by western blot with Catalog No:116759(VDBP,GC antibody) at dilution of 1:1500



Immunohistochemical of paraffin-embedded human liver using Catalog No:116759(VDBP,GC antibody) at dilution of 1:100 (under 10x lens)



Immunohistochemical of paraffin-embedded human liver using Catalog No:116759(VDBP,GC antibody) at dilution of 1:100 (under 40x lens)