

# USP16 antibody



Catalog Number: 116593

## Product name

USP16 antibody

WB: 1:500-1:5000

IP: 1:500-1:5000

## Specificity

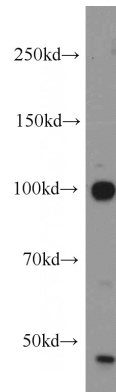
Human, Mouse, Rat; other species not tested.

IHC: 1:20-1:200

## Antibody description

USP16 Rabbit Polyclonal antibody. Positive WB detected in HeLa cells. Positive IP detected in HeLa cells. Positive IHC detected in human kidney tissue, human brain tissue, human heart tissue, human ovary tissue, human skin tissue, human spleen tissue, human testis tissue. Observed molecular weight by Western-blot: 100 kDa

## Validations



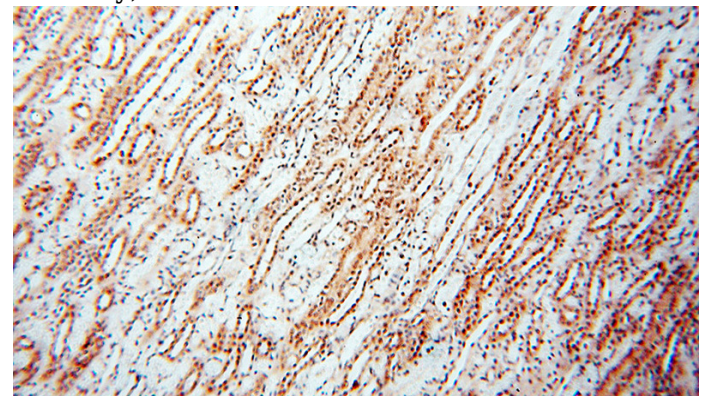
## Preparation

This antibody was obtained by immunization of USP16 recombinant protein (Accession Number: XM\_017028259). Purification method: Antigen affinity purified.

HeLa cells were subjected to SDS PAGE followed by western blot with Catalog No:116593(USP16 antibody) at dilution of 1:1000

## Formulation

PBS with 0.02% sodium azide and 50% glycerol pH 7.3.



## Storage

Store at -20°C. DO NOT ALIQUOT

## Clonality

Polyclonal

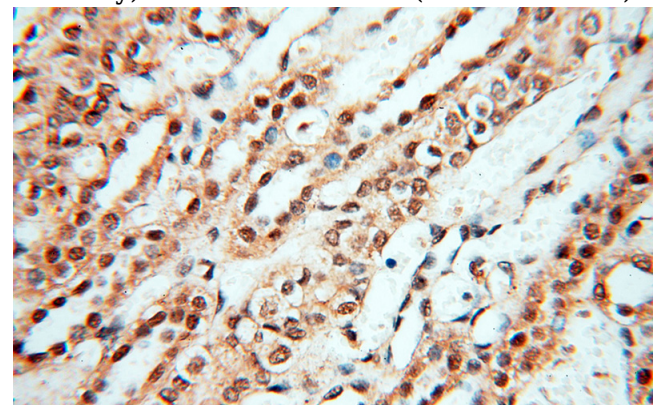
Immunohistochemical of paraffin-embedded human kidney using Catalog No:116593(USP16 antibody) at dilution of 1:100 (under 10x lens)

## Ig Type

Rabbit IgG

## Applications

ELISA, WB, IHC, IP



## Dilutions

Recommended Dilution:

# USP16 antibody

Catalog Number: 116593

---

Immunohistochemical of paraffin-embedded human kidney using Catalog No:116593(USP16 antibody) at dilution of 1:100 (under 40x lens)

IP Result of anti-USP16 (IP:Catalog No:116593, 5ug; Detection:Catalog No:116593 1:1000) with HeLa cells lysate 880ug.

