

UBE2C antibody

Catalog Number: 116517

Product name

UBE2C antibody

IP: 1:200-1:1000

IHC: 1:20-1:200

Specificity

Human, Mouse, Rat; other species not tested.

Antibody description

UBE2C Rabbit Polyclonal antibody. Positive IHC detected in human colon cancer tissue. Positive IP detected in HeLa cells. Positive WB detected in HeLa cells. Observed molecular weight by Western-blot: 20 kDa

Preparation

This antibody was obtained by immunization of UBE2C recombinant protein (Accession Number: NM_007019). Purification method: Antigen affinity purified.

Formulation

PBS with 0.1% sodium azide and 50% glycerol pH 7.3.

Storage

Store at -20°C. DO NOT ALIQUOT

Clonality

Polyclonal

Ig Type

Rabbit IgG

Applications

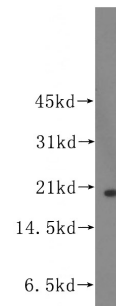
ELISA, WB, IHC, IP

Dilutions

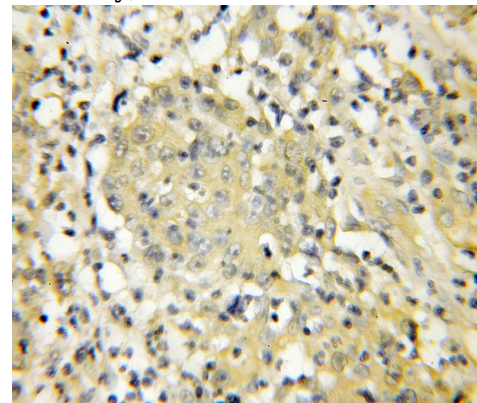
Recommended Dilution:

WB: 1:200-1:2000

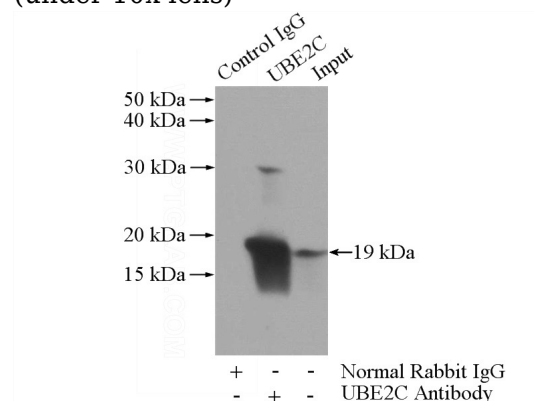
Validations



HeLa cells were subjected to SDS PAGE followed by western blot with Catalog No:116517(UBE2C antibody) at dilution of 1:500



Immunohistochemical of paraffin-embedded human colon cancer using Catalog No:116517(UBE2C antibody) at dilution of 1:50 (under 10x lens)



IP Result of anti-UBE2C (IP:Catalog No:116517,

UBE2C antibody



Catalog Number: 116517

3ug; Detection:Catalog No:116517 1:300) with HeLa cells lysate 2440ug.