

# TRPC6 antibody

Catalog Number: 116409

## Product name

TRPC6 antibody

WB: N/AIP: 1:200-1:1000

IHC: 1:20-1:200

## Specificity

Human, Mouse, Rat; other species not tested.

## Antibody description

TRPC6 Rabbit Polyclonal antibody. Positive IP detected in mouse lung tissue. Positive WB detected in mouse brain, COLO 320 cells, mouse lung tissue. Positive FC detected in A549 cells. Positive IHC detected in human placenta tissue. Observed molecular weight by Western-blot: 97 kDa

## Preparation

This antibody was obtained by immunization of TRPC6 recombinant protein (Accession Number: NM\_004621). Purification method: Antigen affinity purified.

## Formulation

PBS with 0.02% sodium azide and 50% glycerol pH 7.3.

## Storage

Store at -20°C. DO NOT ALIQUOT

## Clonality

Polyclonal

## Ig Type

Rabbit IgG

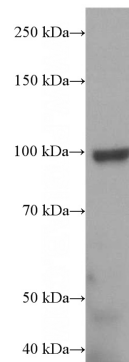
## Applications

ELISA, IHC, WB, IP, FC

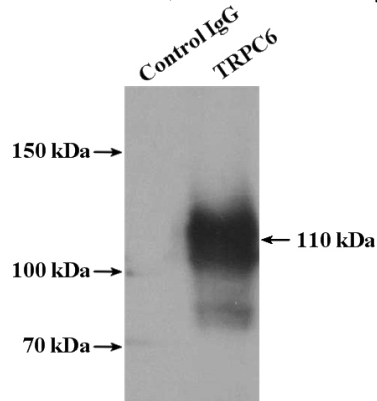
## Dilutions

Recommended Dilution:

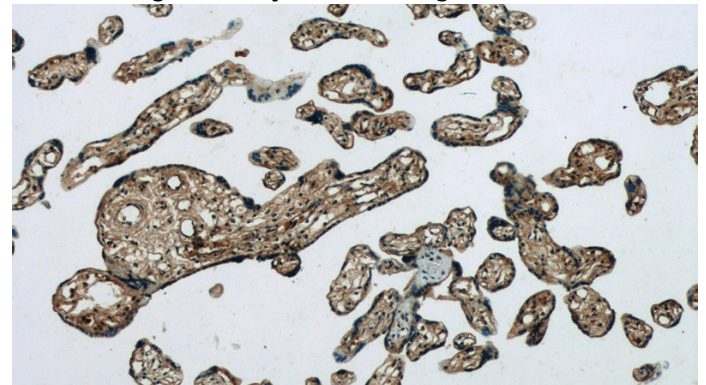
## Validations



mouse brain tissue were subjected to SDS PAGE followed by western blot with Catalog No:116409(TRPC6 antibody) at dilution of 1:500



IP Result of anti-TRPC6 (IP:Catalog No:116409, 4ug; Detection:Catalog No:116409 1:300) with mouse lung tissue lysate 3600ug.

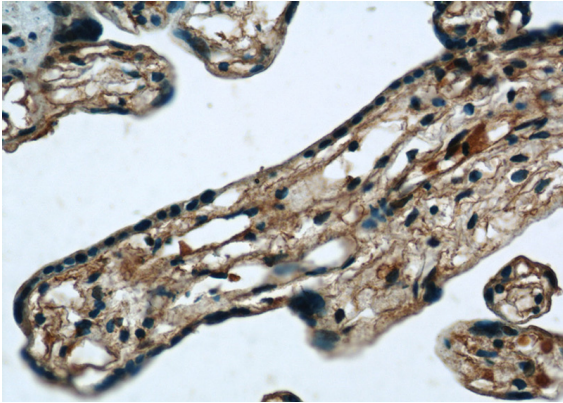


Immunohistochemistry of paraffin-embedded human placenta tissue slide using Catalog No:116409

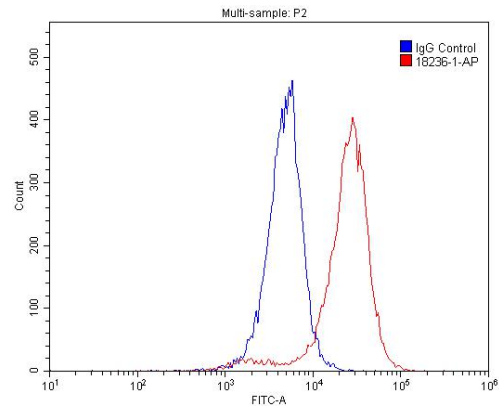
# TRPC6 antibody

Catalog Number: 116409

No:116409(TRPC6 Antibody) at dilution of 1:50  
(under 10x lens)



Immunohistochemistry of paraffin-embedded human placenta tissue slide using Catalog No:116409(TRPC6 Antibody) at dilution of 1:50 (under 40x lens)



1X10<sup>6</sup> A549 cells were stained with 0.2ug TRPC6 antibody (Catalog No:116409, red) and control antibody (blue). Fixed with 4% PFA blocked with 3% BSA (30 min). Alexa Fluor 488-conjugated AffiniPure Goat Anti-Rabbit IgG(H+L) with dilution 1:1500.