

# TGFBI / BIGH3 antibody



Catalog Number: 116022

## Product name

TGFBI / BIGH3 antibody

## Immunogen

[Human BIGH3 Recombinant protein \(GST tag\)](#)

## Specificity

Human, Mouse, Rat; other species not tested.

## Antibody description

TGFBI / BIGH3 Rabbit Polyclonal antibody. Positive WB detected in Y79 cells, HeLa cells, human kidney tissue, mouse eye tissue, mouse liver tissue. Positive IP detected in HeLa cells. Positive IHC detected in human liver cancer tissue, human kidney tissue, human pancreas cancer tissue. Observed molecular weight by Western-blot: 64 kDa

## Preparation

This antibody was obtained by immunization of TGFBI / BIGH3 recombinant protein (Accession Number: NM\_000358). Purification method: Antigen affinity purified.

## Formulation

PBS with 0.1% sodium azide and 50% glycerol pH 7.3.

## Storage

Store at -20°C. DO NOT ALIQUOT

## Clonality

Polyclonal

## Ig Type

Rabbit IgG

## Applications

ELISA, IP, IHC, WB

## Dilutions

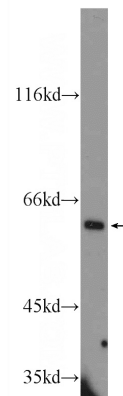
Recommended Dilution:

WB: 1:200-1:2000

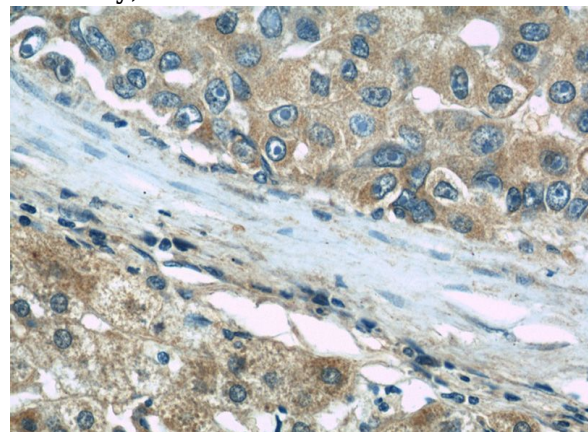
IP: 1:200-1:1000

IHC: 1:20-1:200

## Validations



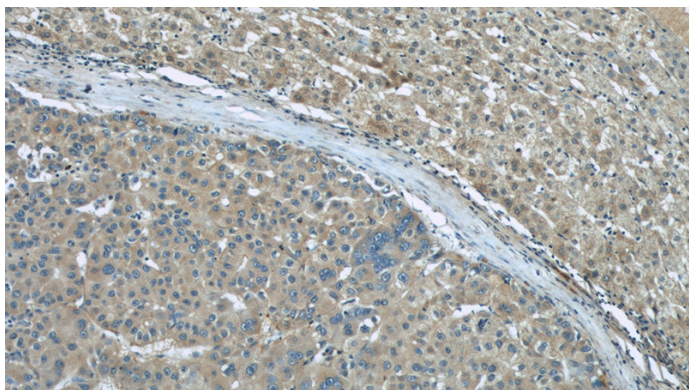
Y79 cells were subjected to SDS PAGE followed by western blot with Catalog No:116022(BIGH3 Antibody) at dilution of 1:600



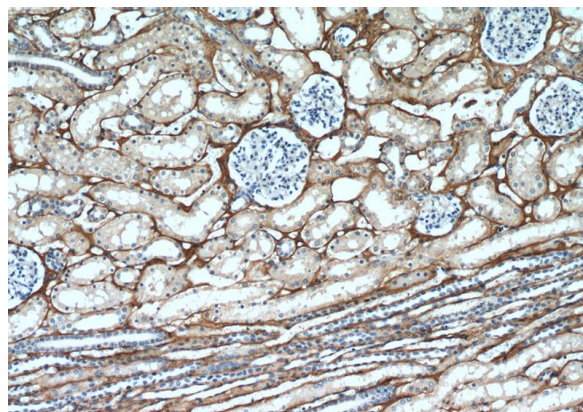
Immunohistochemical of paraffin-embedded human liver cancer using Catalog No:116022(BIGH3 antibody) at dilution of 1:50 (under 40x lens)

# TGFBI / BIGH3 antibody

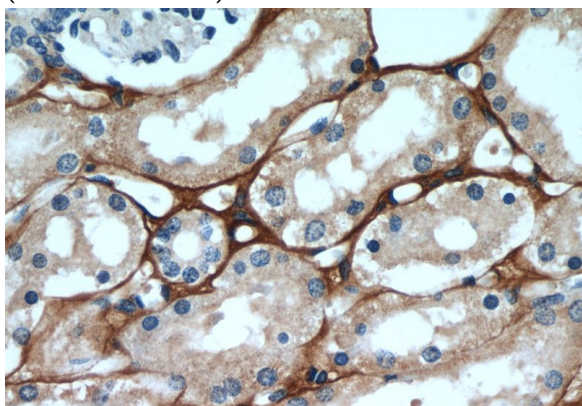
Catalog Number: 116022



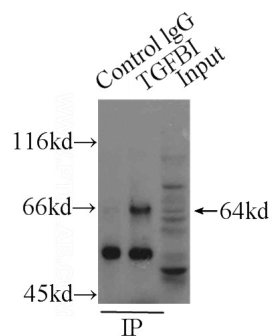
Immunohistochemical of paraffin-embedded human liver cancer using Catalog No:116022(BIGH3 antibody) at dilution of 1:50 (under 10x lens)



Immunohistochemical of paraffin-embedded human kidney using Catalog No:116022(BIGH3 antibody) at dilution of 1:50 (under 10x lens)



Immunohistochemical of paraffin-embedded human kidney using Catalog No:116022(BIGH3 antibody) at dilution of 1:50 (under 40x lens)



IP Result of anti-BIGH3 (IP:Catalog No:116022, 3ug; Detection:Catalog No:116022 1:300) with HeLa cells lysate 1000ug.