

Talin-1 antibody



Catalog Number: 115845

Product name

Talin-1 antibody

WB: 1:500-1:5000

IHC: 1:20-1:200

Specificity

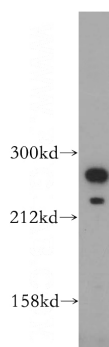
Human, Mouse, Rat; other species not tested.

IF: 1:20-1:200

Validations

Antibody description

Talin-1 Rabbit Polyclonal antibody. Positive WB detected in HeLa cells, HepG2 cells, NIH/3T3 cells. Positive FC detected in HepG2 cells. Positive IHC detected in human colon cancer tissue, human liver cancer tissue. Positive IF detected in HepG2 cells. Observed molecular weight by Western-blot: 270kd, 230kd

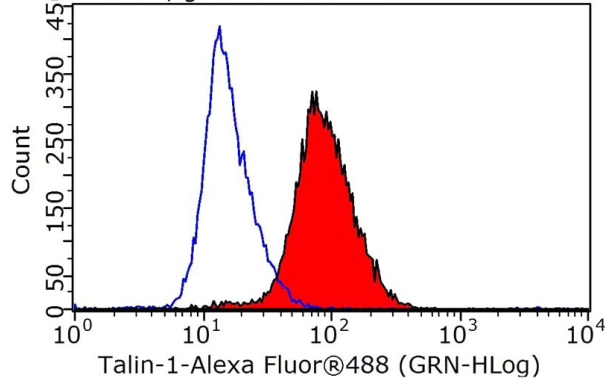


Preparation

This antibody was obtained by immunization of Talin-1 recombinant protein (Accession Number: NM_006289). Purification method: Antigen affinity purified.

HeLa cells were subjected to SDS PAGE followed by western blot with Catalog No:115845(TLN1 antibody) at dilution of 1:500

Plot P03, gated on P01.R1



Formulation

PBS with 0.02% sodium azide and 50% glycerol pH 7.3.

Storage

Store at -20°C. DO NOT ALIQUOT

Clonality

Polyclonal

Ig Type

Rabbit IgG

Applications

ELISA, WB, IHC, IF, FC

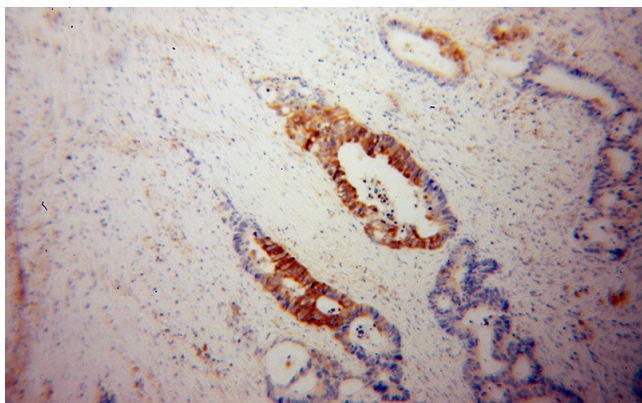
Dilutions

Recommended Dilution:

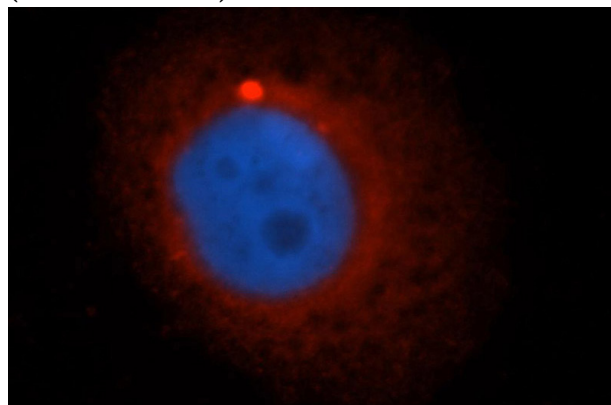
1X10⁶ HepG2 cells were stained with 0.2ug TLN1 antibody (Catalog No:115845, red) and control antibody (blue). Fixed with 90% MeOH blocked with 3% BSA (30 min). Alexa Fluor 488-conjugated AffiniPure Goat Anti-Rabbit IgG(H+L) with dilution 1:1000.

Talin-1 antibody

Catalog Number: 115845



Immunohistochemical of paraffin-embedded human colon cancer using Catalog No:115845(TLN1 antibody) at dilution of 1:100 (under 40x lens)



Immunofluorescent analysis of HepG2 cells, using TLN1 antibody Catalog No:115845 at 1:50 dilution and Rhodamine-labeled goat anti-rabbit IgG (red). Blue pseudocolor = DAPI (fluorescent DNA dye).

