

# SUMO1 antibody



Catalog Number: 115836

## Product name

SUMO1 antibody

## Immunogen

[Human SUMO1 Recombinant protein \(GST tag\)](#)

## Specificity

Human, Mouse, Rat; other species not tested.

## Antibody description

SUMO1 Rabbit Polyclonal antibody. Positive WB detected in NIH/3T3 cells, mouse spleen tissue. Observed molecular weight by Western-blot: 10-12 kDa, 80-90 kDa

## Preparation

This antibody was obtained by immunization of SUMO1 recombinant protein (Accession Number: NM\_001005781). Purification method: Antigen affinity purified.

## Formulation

PBS with 0.1% sodium azide and 50% glycerol pH 7.3.

## Storage

Store at -20°C. DO NOT ALIQUOT

## Clonality

Polyclonal

## Ig Type

Rabbit IgG

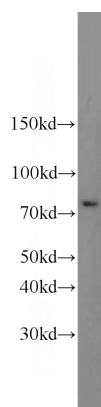
## Applications

ELISA, WB

## Dilutions

Recommended Dilution:  
WB: 1:200-1:2000

## Validations



NIH/3T3 cells were subjected to SDS PAGE followed by western blot with Catalog No:115836(SUMO1 antibody) at dilution of 1:600