

SUFU antibody

Catalog Number: 115822

Product name

SUFU antibody

Immunogen

Specificity

Human, Mouse, Rat; other species not tested.

Antibody description

SUFU Rabbit Polyclonal antibody. Positive IF detected in hTERT-RPE1 cells. Positive IHC detected in human ovary tumor tissue. Observed molecular weight by Western-blot: 54 kDa

Preparation

This antibody was obtained by immunization of SUFU recombinant protein (Accession Number: NM_016169). Purification method: Antigen affinity purified.

Formulation

PBS with 0.1% sodium azide and 50% glycerol pH 7.3.

Storage

Store at -20°C. DO NOT ALIQUOT

Clonality

Polyclonal

Ig Type

Rabbit IgG

Applications

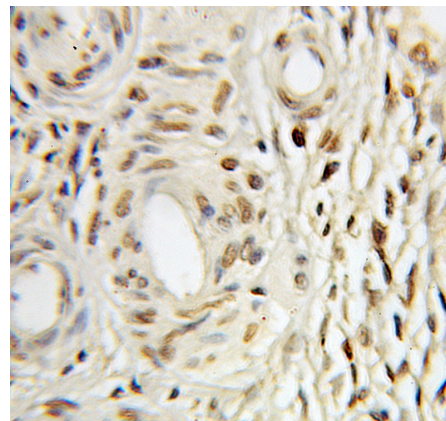
ELISA, IHC, IF

Dilutions

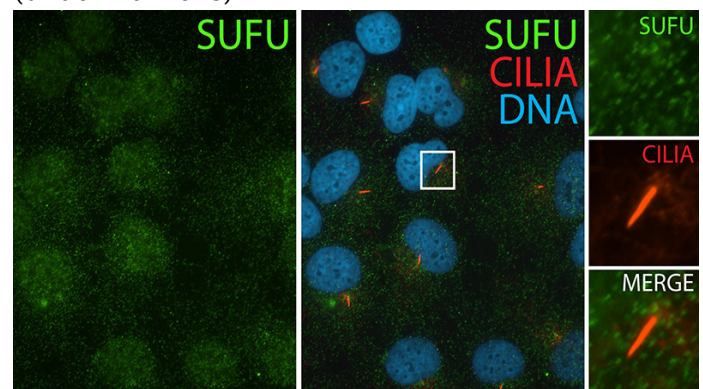
Recommended Dilution:
IHC: 1:20-1:200

IF: N/A

Validations



Immunohistochemical of paraffin-embedded human ovary tumor using Catalog No:115822(SUFU antibody) at dilution of 1:100 (under 10x lens)



IF result (nuclear and cytoplasm stain) of anti-SUFU (Catalog No:115822, 1:50) with serum-starved hTERT-RPE1 cells by Dr. Moshe Kim.