

# Synaptoporin antibody

Catalog Number: 115770

## Product name

Synaptoporin antibody

## Immunogen

## Specificity

Human, Mouse; other species not tested.

## Antibody description

Synaptoporin Rabbit Polyclonal antibody. Positive IHC detected in human gliomas tissue, human brain tissue, human colon tissue. Positive IP detected in mouse brain tissue. Positive WB detected in mouse brain tissue, human brain tissue, mouse cerebellum tissue. Observed molecular weight by Western-blot: 37 kDa

## Preparation

This antibody was obtained by immunization of Synaptoporin recombinant protein (Accession Number: NM\_144642). Purification method: Antigen affinity purified.

## Formulation

PBS with 0.1% sodium azide and 50% glycerol pH 7.3.

## Storage

Store at -20°C. DO NOT ALIQUOT

## Clonality

Polyclonal

## Ig Type

Rabbit IgG

## Applications

ELISA, WB, IHC, IP

## Dilutions

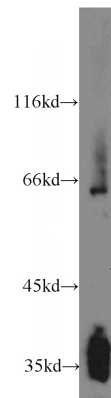
Recommended Dilution:

WB: 1:200-1:2000

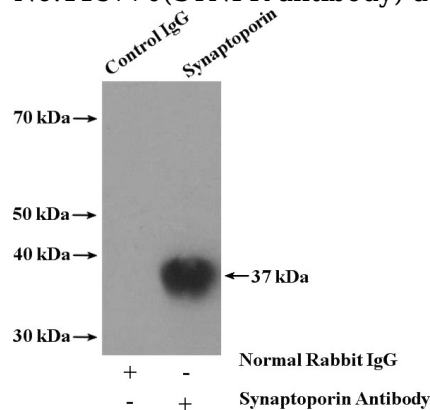
IP: 1:200-1:2000

IHC: 1:20-1:200

## Validations



mouse brain tissue were subjected to SDS PAGE followed by western blot with Catalog No:115770(SYNPR antibody) at dilution of 1:800

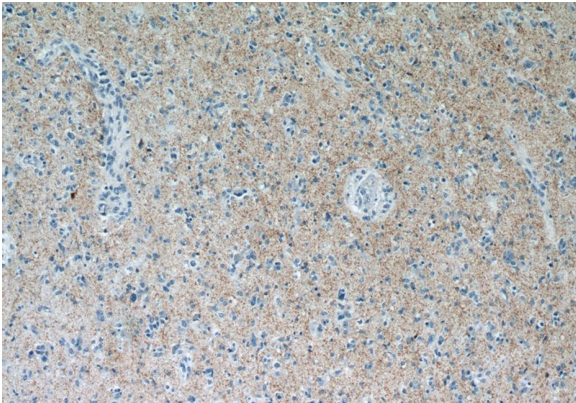


IP Result of anti-SYNPR (IP:Catalog No:115770, 4ug; Detection:Catalog No:115770 1:500) with mouse brain tissue lysate 5200ug.

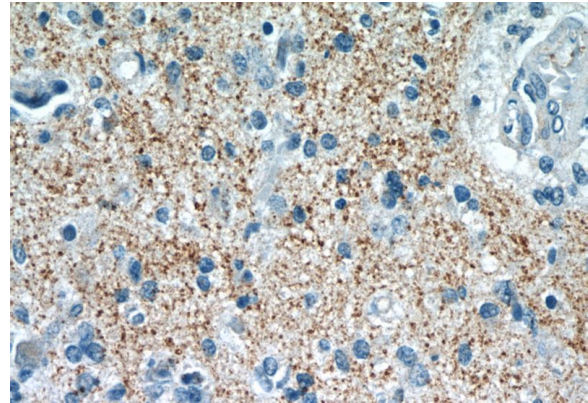
# Synaptoporin antibody

Catalog Number: 115770

---



Immunohistochemistry of paraffin-embedded human gliomas tissue slide using Catalog No:115770(SYNPR Antibody) at dilution of 1:50



Immunohistochemistry of paraffin-embedded human gliomas tissue slide using Catalog No:115770(SYNPR Antibody) at dilution of 1:50