

SR140 antibody



Catalog Number: 115660

General Information

Product name:

SR140 antibody

Immunogen:

Applications:

ELISA, WB, IHC, IF

Specificity:

Human, Mouse, Rat; other species not tested.

Antibody description:

SR140 Rabbit Polyclonal antibody. Positive WB detected in mouse heart tissue, HeLa cells, human brain tissue, L02 cells. Positive IF detected in HEK-293 cells, HeLa cells, HepG2 cells. Positive IHC detected in human breast cancer tissue. Observed molecular weight by Western-blot: 120-130 kDa

Properties

Preparation:

This antibody was obtained by immunization of SR140 recombinant protein (Accession Number: BC111692). Purification method: Antigen affinity purified.

Formulation:

PBS with 0.02% sodium azide and 50% glycerol pH 7.3.

Storage:

Store at -20°C. DO NOT ALIQUOT

Clonality:

Polyclonal

Ig Type: Rabbit IgG

Applications

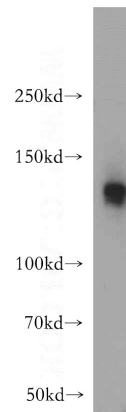
Recommended Dilution:

WB: 1:1000-1:10000

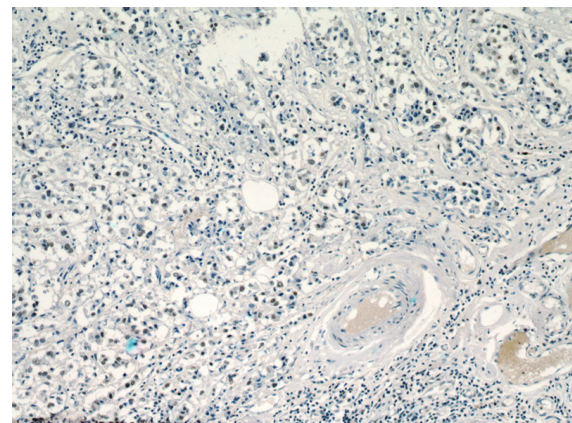
IHC: 1:20-1:200

IF: 1:10-1:100

Validations



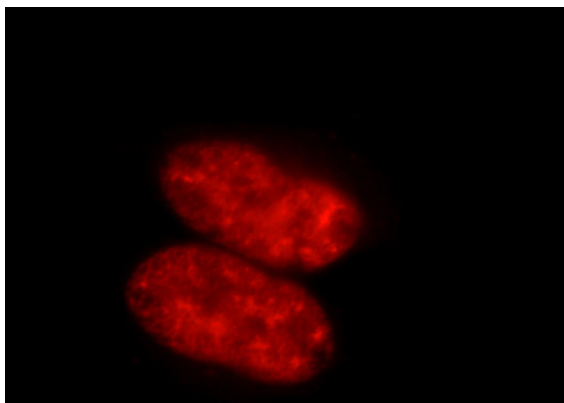
mouse heart tissue were subjected to SDS PAGE followed by western blot with Catalog No:115660(SR140 antibody) at dilution of 1:500



Immunohistochemical of paraffin-embedded human breast cancer using Catalog No:115660(SR140 antibody) at dilution of 1:100 (under 10x lens)

SR140 antibody

Catalog Number: 115660



Immunofluorescent analysis of 293 cells, using SR140 antibody Catalog No:115660 at 1:25 dilution and Rhodamine-labeled goat anti-rabbit IgG (red).