

SQLE antibody



Catalog Number: 115658

Product name

SQLE antibody

Recommended Dilution:

WB: 1:200-1:2000

Immunogen

[Human SQLE Recombinant protein \(His tag\)](#)

IP: 1:200-1:1000

IHC: 1:20-1:200

Specificity

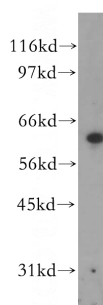
Human, Mouse, Rat; other species not tested.

IF: 1:20-1:200

Validations

Antibody description

SQLE Rabbit Polyclonal antibody. Positive WB detected in A549 cells, HEK-293 cells. Positive IP detected in A549 cells. Positive IHC detected in human breast cancer tissue, human prostate cancer tissue. Positive IF detected in PC-3 cells. Observed molecular weight by Western-blot: 64kd



Preparation

This antibody was obtained by immunization of SQLE recombinant protein (Accession Number: NM_003129). Purification method: Antigen affinity purified.

A549 cells were subjected to SDS PAGE followed by western blot with Catalog No:115658(SQLE antibody) at dilution of 1:300

Formulation

PBS with 0.1% sodium azide and 50% glycerol pH 7.3.

Storage

Store at -20°C. DO NOT ALIQUOT

Clonality

Polyclonal

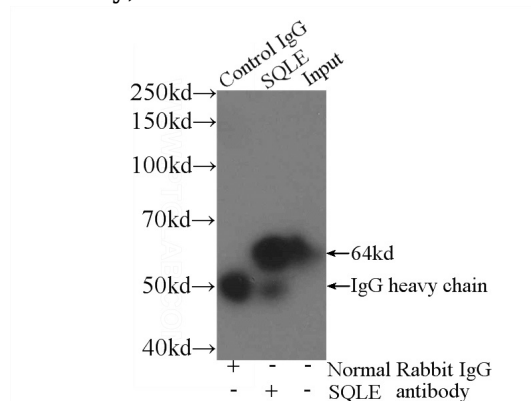
Ig Type

Rabbit IgG

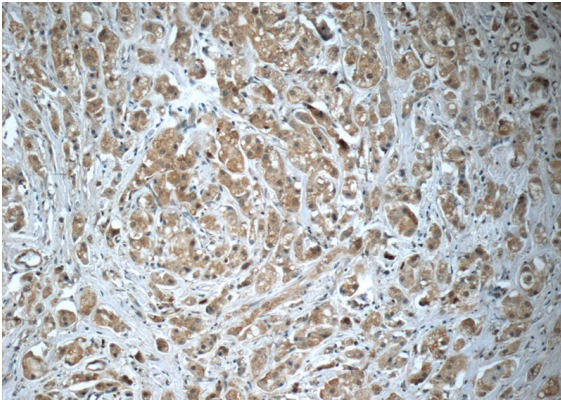
Applications

ELISA, WB, IHC, IP, IF

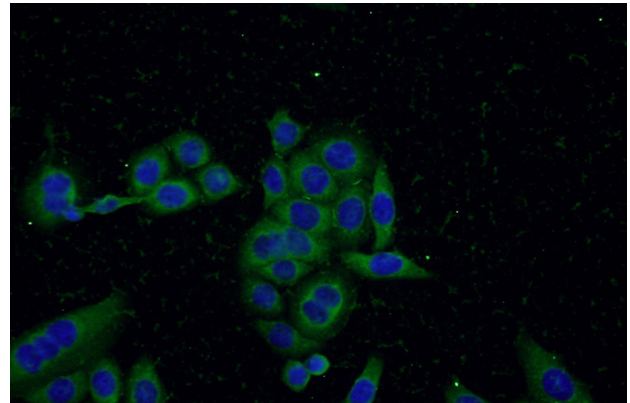
Dilutions



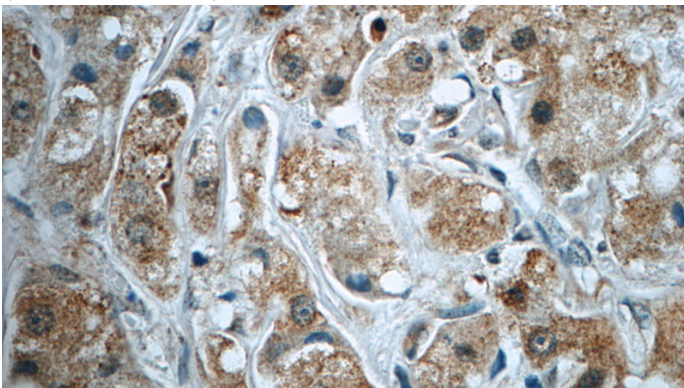
IP Result of anti-SQLE (IP:Catalog No:115658, 3ug; Detection:Catalog No:115658 1:300) with A549 cells lysate 920ug.



Immunohistochemistry of paraffin-embedded human breast cancer tissue slide using Catalog No:115658(SQLE Antibody) at dilution of 1:50 (under 40x lens)



Immunofluorescent analysis of PC-3 cells using Catalog No:115658(SQLE Antibody) at dilution of 1:50 and Alexa Fluor 488-conjugated AffiniPure Goat Anti-Rabbit IgG(H+L)



Immunohistochemistry of paraffin-embedded human breast cancer tissue slide using Catalog No:115658(SQLE Antibody) at dilution of 1:50 (under 10x lens)