

# ST2 antibody



Catalog Number: 115621

## Product name

ST2 antibody

## Specificity

Human, Mouse, Rat; other species not tested.

## Antibody description

ST2 Rabbit Polyclonal antibody. Positive WB detected in mouse brain tissue. Positive IHC detected in human lung cancer tissue, human heart tissue. Observed molecular weight by Western-blot: 30 kDa, 40 kDa

## Preparation

This antibody was obtained by immunization of ST2 recombinant protein (Accession Number: NM\_003856). Purification method: Antigen affinity purified.

## Formulation

PBS with 0.1% sodium azide and 50% glycerol pH 7.3.

## Storage

Store at -20°C. DO NOT ALIQUOT

## Clonality

Polyclonal

## Ig Type

Rabbit IgG

## Applications

ELISA, WB, IHC

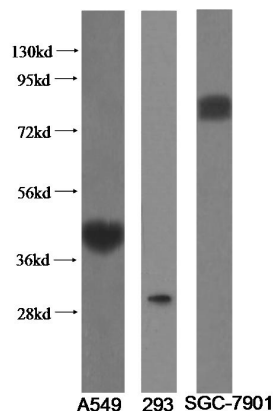
## Dilutions

Recommended Dilution:

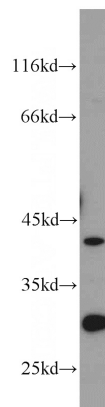
WB: 1:500-1:5000

IHC: 1:50-1:500

## Validations

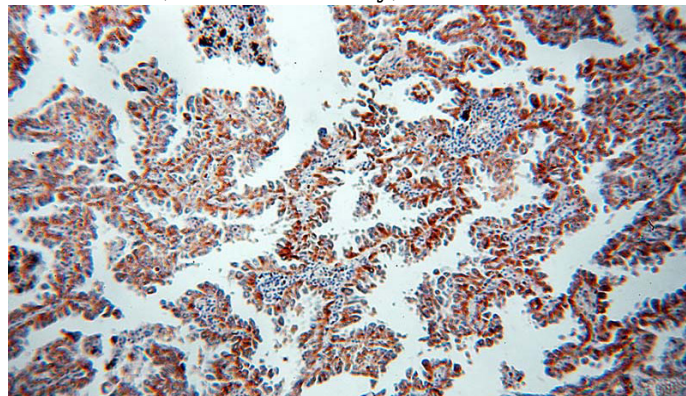


Variants of IL1RL1 recognized by Catalog



No:115621.

mouse brain tissue were subjected to SDS PAGE followed by western blot with Catalog No:115621(IL1RL1 antibody) at dilution of 1:1000

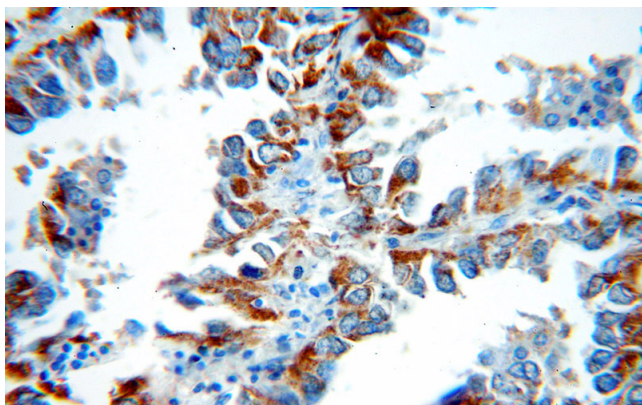


Immunohistochemical of paraffin-embedded human lung cancer using Catalog No:115621(IL1RL1 antibody) at dilution of 1:50 (under 10x lens)

## ST2 antibody

Catalog Number: 115621

---



Immunohistochemical of paraffin-embedded human lung cancer using Catalog No:115621(IL1RL1 antibody) at dilution of 1:50 (under 40x lens)