

# SRY antibody



Catalog Number: 115603

## Product name

SRY antibody

## Immunogen

## Specificity

Human, Mouse; other species not tested.

## Antibody description

SRY Rabbit Polyclonal antibody. Positive WB detected in human testis tissue. Positive IHC detected in human kidney tissue, human spleen tissue, human testis tissue. Observed molecular weight by Western-blot: 30kd

## Preparation

This antibody was obtained by immunization of SRY recombinant protein (Accession Number: NM\_003140). Purification method: Antigen affinity purified.

## Formulation

PBS with 0.02% sodium azide and 50% glycerol pH 7.3.

## Storage

Store at -20°C. DO NOT ALIQUOT

## Clonality

Polyclonal

## Ig Type

Rabbit IgG

## Applications

ELISA, WB, IHC

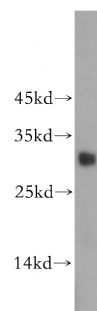
## Dilutions

Recommended Dilution:

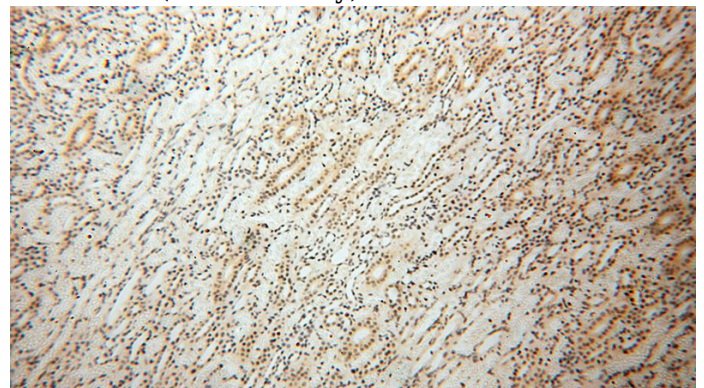
WB: 1:200-1:2000

IHC: 1:20-1:200

## Validations



human testis tissue were subjected to SDS PAGE followed by western blot with Catalog No:115603(SRY antibody) at dilution of 1:500



Immunohistochemical of paraffin-embedded human kidney using Catalog No:115603(SRY antibody) at dilution of 1:100 (under 10x lens)