

SPINT1/HAI-1 antibody



Catalog Number: 115574

Product name

SPINT1/HAI-1 antibody

Specificity

Human; other species not tested.

Antibody description

SPINT1/HAI-1 Rabbit Polyclonal antibody. Positive WB detected in human placenta tissue, Transfected HEK-293 cells. Positive IF detected in NIH/3T3 cells. Observed molecular weight by Western-blot: 58 kDa

Preparation

This antibody was obtained by immunization of SPINT1/HAI-1 recombinant protein (Accession Number: NM_001032367). Purification method: Antigen affinity purified.

Formulation

PBS with 0.02% sodium azide and 50% glycerol pH 7.3.

Storage

Store at -20°C. DO NOT ALIQUOT

Clonality

Polyclonal

Ig Type

Rabbit IgG

Applications

ELISA, WB, IF

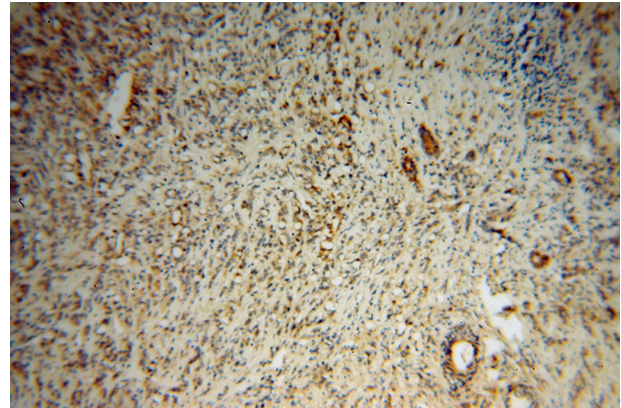
Dilutions

Recommended Dilution:

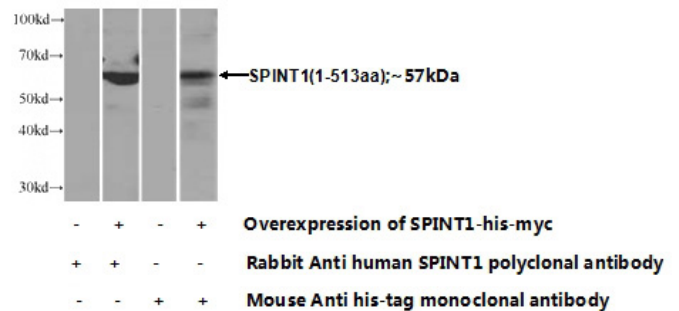
WB: 1:200-1:1000

IF: 1:50-1:500

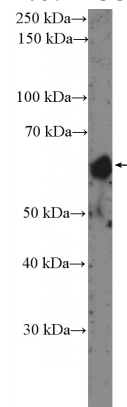
Validations



Immunohistochemical of paraffin-embedded human prostate cancer using Catalog No:115574(SPINT1 antibody) at dilution of 1:100 (under 10x lens)



Transfected HEK-293 cells were subjected to SDS PAGE followed by western blot with Catalog No:115574(SPINT1 Antibody) at dilution of 1:1000

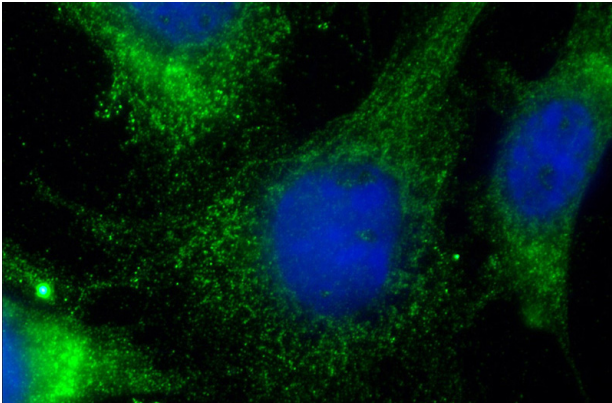


human placenta tissue were subjected to SDS PAGE followed by western blot with Catalog No:115574(SPINT1 Antibody) at dilution of 1:300

SPINT1/HAI-1 antibody



Catalog Number: 115574



Immunofluorescent analysis of (-20oc Ethanol) fixed NIH/3T3 cells using Catalog No:115574(SPINT1 Antibody) at dilution of 1:50 and Alexa Fluor 488-conjugated AffiniPure Goat Anti-Rabbit IgG(H+L)