

SPIN1 antibody



Catalog Number: 115570

Product name

SPIN1 antibody

Specificity

Human, Mouse, Rat; other species not tested.

Antibody description

SPIN1 Rabbit Polyclonal antibody. Positive IHC detected in human ovary tumor tissue. Positive IF detected in HEK-293 cells. Positive IP detected in HeLa cells. Positive WB detected in HeLa cells, human brain tissue, mouse brain tissue, mouse ovary tissue, PC-3 cells, rat brain tissue, SKOV-3 cells. Observed molecular weight by Western-blot: 30 kDa

Preparation

This antibody was obtained by immunization of SPIN1 recombinant protein (Accession Number: BC013571). Purification method: Antigen affinity purified.

Formulation

PBS with 0.1% sodium azide and 50% glycerol pH 7.3.

Storage

Store at -20°C. DO NOT ALIQUOT

Clonality

Polyclonal

Ig Type

Rabbit IgG

Applications

ELISA, WB, IP, IHC, IF

Dilutions

Recommended Dilution:

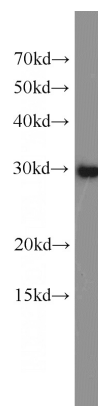
WB: 1:200-1:2000

IP: 1:200-1:2000

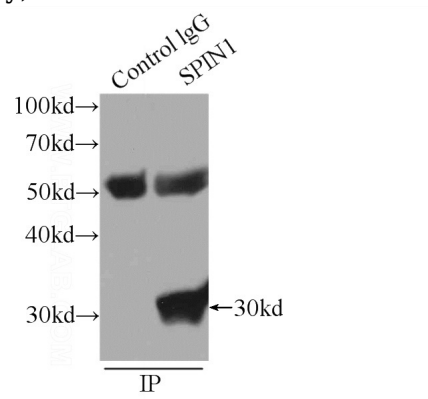
IHC: 1:20-1:200

IF: 1:20-1:200

Validations



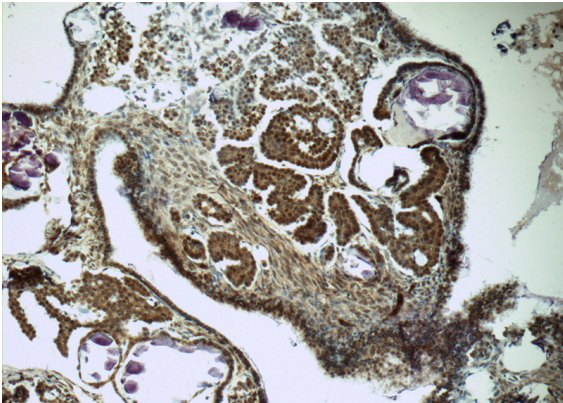
HeLa cells were subjected to SDS PAGE followed by western blot with Catalog No:115570 (SPIN1 antibody) at dilution of 1:800



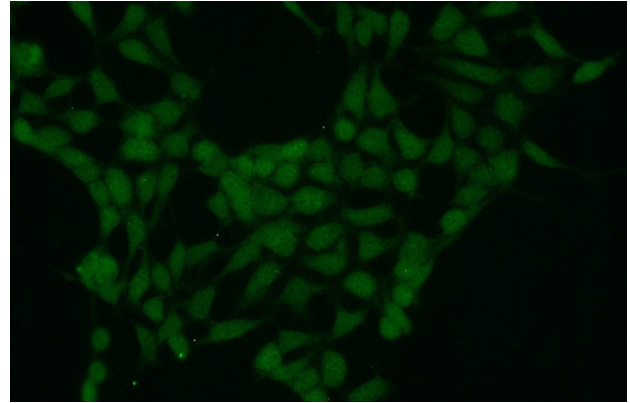
IP Result of anti-SPIN1 (IP: Catalog No: 115570, 3ug; Detection: Catalog No: 115570 1:800) with HeLa cells lysate 1840ug.

SPIN1 antibody

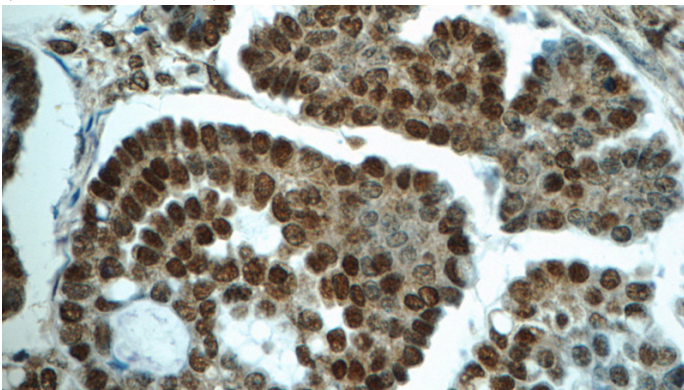
Catalog Number: 115570



Immunohistochemistry of paraffin-embedded human ovary tumor tissue slide using Catalog No:115570 (SPIN1 Antibody) at dilution of 1:50 (under 40x lens)



Immunofluorescent analysis of HEK-293 cells using Catalog No:115570 (SPIN1 Antibody) at dilution of 1:50 and Alexa Fluor 488-conjugated AffiniPure Goat Anti-Rabbit IgG(H+L)



Immunohistochemistry of paraffin-embedded human ovary tumor tissue slide using Catalog No:115570 (SPIN1 Antibody) at dilution of 1:50 (under 10x lens)