

# SNAPC5 antibody



Catalog Number: 115448

## Product name

SNAPC5 antibody

IHC: 1:20-1:200

IF: 1:20-1:200

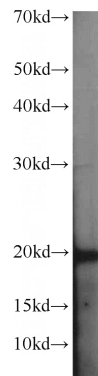
## Specificity

Human; other species not tested.

## Validations

## Antibody description

SNAPC5 Rabbit Polyclonal antibody. Positive IF detected in HeLa cells. Positive IHC detected in human testis tissue, human breast cancer tissue, human kidney tissue. Positive WB detected in HeLa cells. Observed molecular weight by Western-blot: 19 kDa



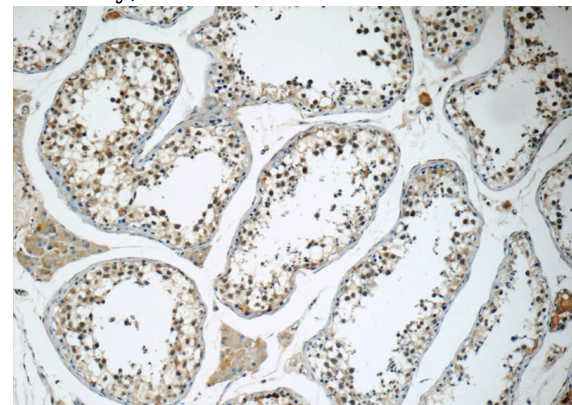
## Preparation

This antibody was obtained by immunization of SNAPC5 recombinant protein (Accession Number: NM\_001329613). Purification method: Antigen affinity purified.

HeLa cells were subjected to SDS PAGE followed by western blot with Catalog No:115448(SNAPC5 antibody) at dilution of 1:500

## Formulation

PBS with 0.1% sodium azide and 50% glycerol pH 7.3.



## Storage

Store at -20°C. DO NOT ALIQUOT

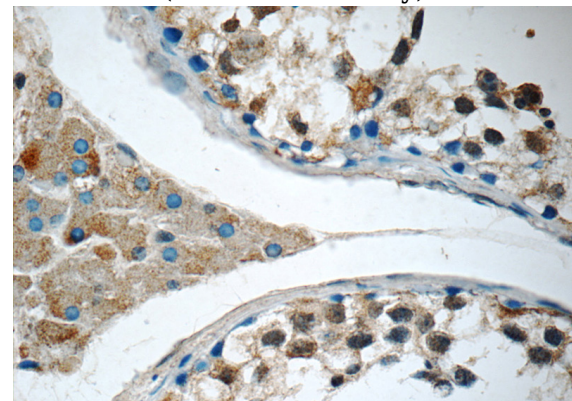
## Clonality

Polyclonal

Immunohistochemistry of paraffin-embedded human testis tissue slide using Catalog No:115448(SNAPC5 Antibody) at dilution of 1:50

## Ig Type

Rabbit IgG



## Applications

ELISA, WB, IHC, IF

## Dilutions

Recommended Dilution:

WB: 1:200-1:2000

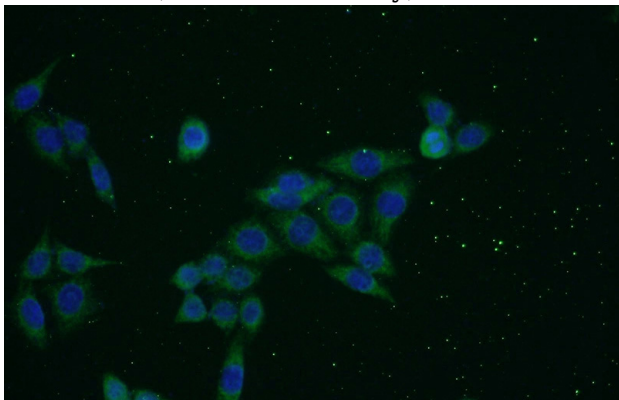
Immunohistochemistry of paraffin-embedded human testis tissue slide using Catalog

# SNAPC5 antibody

Catalog Number: 115448

---

No:115448(SNAPC5 Antibody) at dilution of 1:50



Immunofluorescent analysis of HeLa cells using Catalog No:115448(SNAPC5 Antibody) at dilution of 1:50 and Alexa Fluor 488-conjugated AffiniPure Goat Anti-Rabbit IgG(H+L)