

SNAP29 antibody



Catalog Number: 115447

Product name

SNAP29 antibody

WB: 1:500-1:5000

IP: 1:200-1:2000

Specificity

Human, Mouse, Rat; other species not tested.

IHC: 1:20-1:200

IF: 1:20-1:200

Antibody description

SNAP29 Rabbit Polyclonal antibody. Positive WB detected in human kidney tissue, HEK-293 cells, human liver tissue, Jurkat cells. Positive IP detected in Jurkat cells. Positive IF detected in HEK-293 cells. Positive IHC detected in human kidney tissue, human stomach tissue. Observed molecular weight by Western-blot: 29 kDa

Preparation

This antibody was obtained by immunization of SNAP29 recombinant protein (Accession Number: NM_004782). Purification method: Antigen affinity purified.

Formulation

PBS with 0.1% sodium azide and 50% glycerol pH 7.3.

Storage

Store at -20°C. DO NOT ALIQUOT

Clonality

Polyclonal

Ig Type

Rabbit IgG

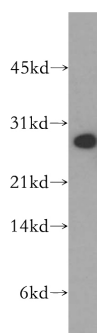
Applications

ELISA, WB, IHC, IP, IF

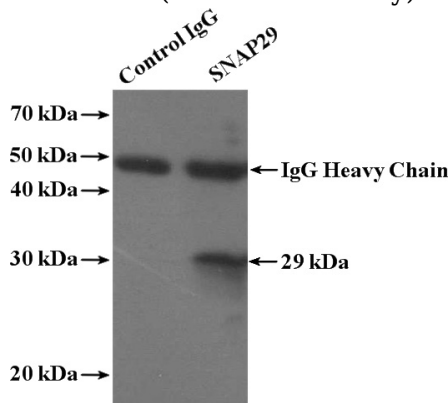
Dilutions

Recommended Dilution:

Validations



human kidney tissue were subjected to SDS PAGE followed by western blot with Catalog No:115447(SNAP29 antibody) at dilution of 1:500

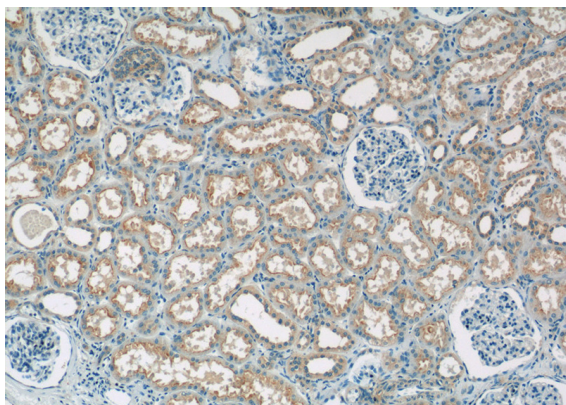


IP Result of anti-SNAP29 (IP:Catalog No:115447, 4ug; Detection:Catalog No:115447 1:600) with Jurkat cells lysate 3200ug.

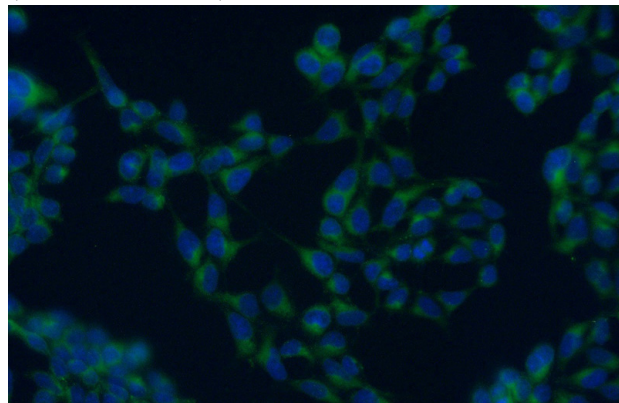
SNAP29 antibody



Catalog Number: 115447



Immunohistochemistry of paraffin-embedded human kidney tissue slide using Catalog No:115447(SNAP29 Antibody) at dilution of 1:50 (under 40x lens)



Immunofluorescent analysis of (-20oc Ethanol) fixed HEK-293 cells using Catalog No:115447(SNAP29 Antibody) at dilution of 1:50 and Alexa Fluor 488-conjugated AffiniPure Goat Anti-Rabbit IgG(H+L)

