

# SMAD1 antibody

Catalog Number: 115415

## General Information

### Product name:

SMAD1 antibody

### Immunogen:

### Applications:

ELISA, WB, IF, IP

### Specificity:

Human, Mouse, Rat; other species not tested.

### Antibody description:

SMAD1 Rabbit Polyclonal antibody. Positive IF detected in HeLa cells, HepG2 cells. Positive WB detected in HepG2 cells, HeLa cells, mouse heart tissue. Positive IP detected in mouse heart tissue. Observed molecular weight by Western-blot: 52 kDa

## Properties

### Preparation:

This antibody was obtained by immunization of SMAD1 recombinant protein (Accession Number: BC001878). Purification method: Antigen affinity purified.

### Formulation:

PBS with 0.1% sodium azide and 50% glycerol pH 7.3.

### Storage:

Store at -20°C. DO NOT ALIQUOT

### Clonality:

Polyclonal

**Ig Type:** Rabbit IgG

## Applications

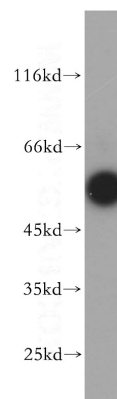
Recommended Dilution:

WB: 1:200-1:2000

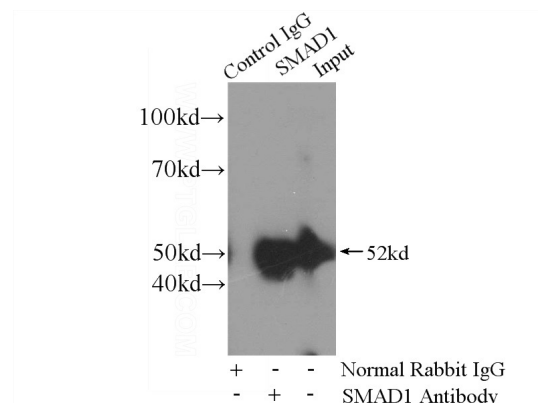
IP: 1:200-1:2000

IF: 1:10-1:100

## Validations



HepG2 cells were subjected to SDS PAGE followed by western blot with Catalog No:115415(SMAD1 antibody) at dilution of 1:300



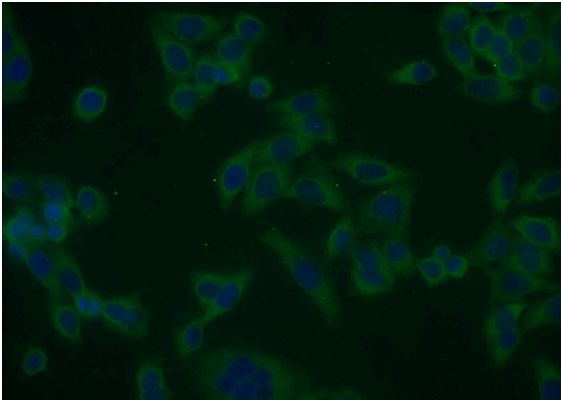
IP Result of anti-SMAD1 (IP:Catalog No:115415, 4ug; Detection:Catalog No:115415 1:500) with mouse heart tissue lysate 8000ug.

# SMAD1 antibody



Catalog Number: 115415

---



Immunofluorescent analysis of HeLa cells using Catalog No:115415(SMAD1 Antibody) at dilution of 1:25 and Alexa Fluor 488-conjugated AffiniPure Goat Anti-Rabbit IgG(H+L)