

Smtnl1-phospho-S301 antibody



Catalog Number: 115402

Product name

Smtnl1-phospho-S301 antibody

Ig Type

Rabbit IgG

Specificity

Mouse; other species not tested.

Applications

ELISA, WB

Antibody description

Smtnl1-phospho-S301 Rabbit Polyclonal antibody.
Positive WB detected in mouse bladder tissue.
Observed molecular weight by Western-blot: 50kd

Dilutions

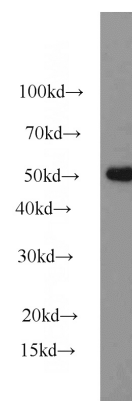
Recommended Dilution:

WB: 1:200-1:2000

Preparation

This antibody was obtained by immunization of
Peptide (Accession Number: NM_024230).
Purification method: Antigen affinity purified.

Validations



Formulation

PBS with 0.02% sodium azide and 50% glycerol
pH 7.3.

Storage

Store at -20°C. DO NOT ALIQUOT

Clonality

Polyclonal

mouse bladder tissue were subjected to SDS PAGE
followed by western blot with Catalog
No:115402(Smtnl1-phospho-S301 antibody) at
dilution of 1:500