

SLC25A23 antibody



Catalog Number: 115329

General Information

Product name:

SLC25A23 antibody

Immunogen:

Applications:

ELISA, WB, IHC

Specificity:

human, mouse, rat; other species not tested.

Antibody description:

SLC25A23 Rabbit Polyclonal antibody. Positive WB detected in mouse pancreas tissue, mouse skeletal muscle tissue, mouse testis tissue, SH-SY5Y cells. Positive IHC detected in human pancreas. Observed molecular weight by Western-blot: 49-54kd

Properties

Preparation:

This antibody was obtained by immunization of SLC25A23 recombinant protein (Accession Number: BC001656). Purification method: Antigen affinity purified.

Formulation:

PBS with 0.02% sodium azide and 50% glycerol pH 7.3.

Storage:

Store at -20°C. DO NOT ALIQUOT

Clonality:

Polyclonal

Ig Type:Rabbit IgG

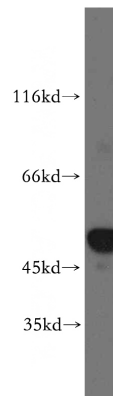
Applications

Recommended Dilution:

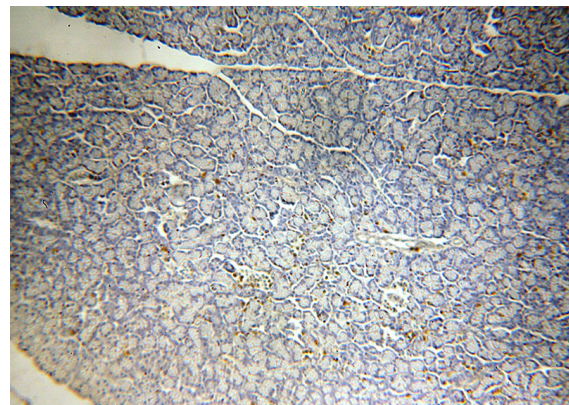
WB: 1:1000-1:10000

IHC: 1:20-1:200

Validations



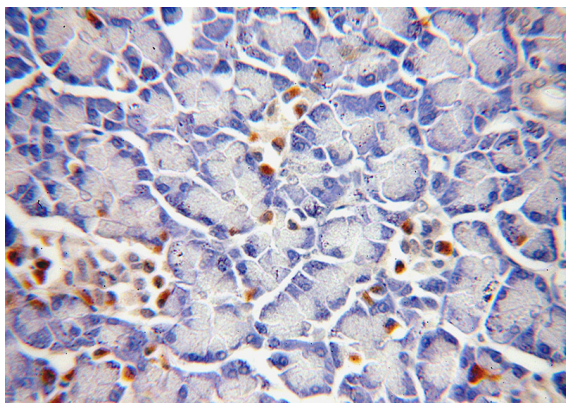
mouse pancreas tissue were subjected to SDS PAGE followed by western blot with Catalog No:115329(SLC25A23 antibody) at dilution of 1:1000



Immunohistochemical of paraffin-embedded human pancreas using Catalog No:115329(SLC25A23 antibody) at dilution of 1:100 (under 10x lens)

SLC25A23 antibody

Catalog Number: 115329



Immunohistochemical of paraffin-embedded human pancreas using Catalog No:115329(SLC25A23 antibody) at dilution of 1:100 (under 40x lens)