

SLAMF6 antibody

Catalog Number: 115295

Product name

SLAMF6 antibody

Specificity

Human; other species not tested.

Antibody description

SLAMF6 Rabbit Polyclonal antibody. Positive WB detected in Daudi cells. Positive IHC detected in human tonsillitis tissue. Observed molecular weight by Western-blot: 60 kDa

Preparation

This antibody was obtained by immunization of SLAMF6 recombinant protein (Accession Number: NM_001184714). Purification method: Antigen affinity purified.

Formulation

PBS with 0.02% sodium azide and 50% glycerol pH 7.3.

Storage

Store at -20°C. DO NOT ALIQUOT

Clonality

Polyclonal

Ig Type

Rabbit IgG

Applications

ELISA, IHC, WB

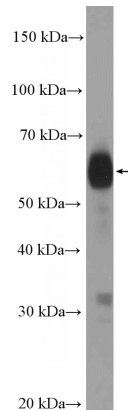
Dilutions

Recommended Dilution:

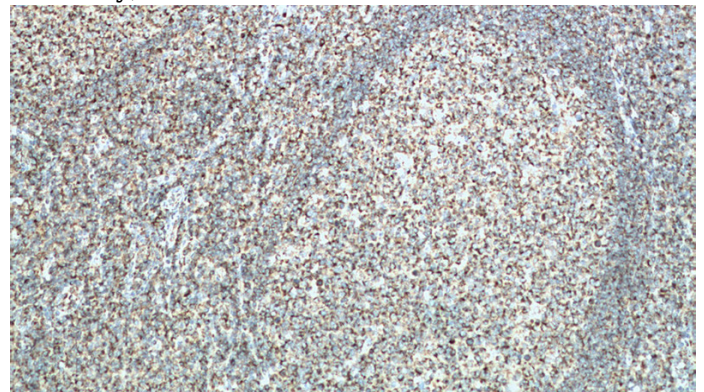
WB: 1:200-1:2000

IHC: 1:50-1:500

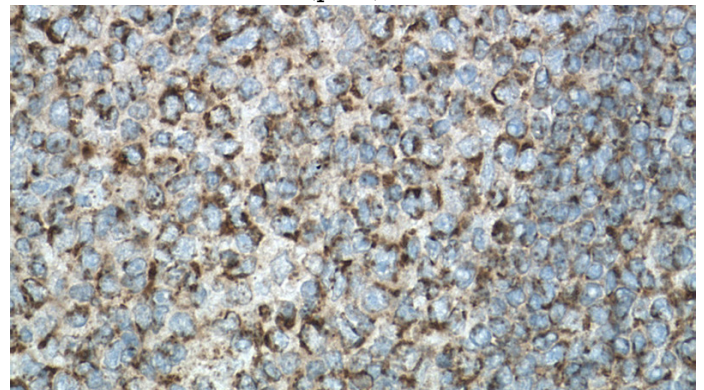
Validations



Daudi cells were subjected to SDS PAGE followed by western blot with Catalog No:115295(SLAMF6 Antibody) at dilution of 1:600



Immunohistochemistry of paraffin-embedded human tonsillitis tissue slide using Catalog No:115295(SLAMF6 Antibody) at dilution of 1:200 (under 10x lens). Heat mediated antigen retrieval with Tris-EDTA buffer(pH9).



Immunohistochemistry of paraffin-embedded human tonsillitis tissue slide using Catalog No:115295(SLAMF6 Antibody) at dilution of 1:200 (under 40x lens). Heat mediated antigen retrieval with Tris-EDTA buffer(pH9).

SLAMF6 antibody



Catalog Number: 115295

with Tris-EDTA buffer(pH9).