

# SHMT1 antibody



Catalog Number: 115276

## Product name

SHMT1 antibody

## Specificity

Human, Mouse, Rat; other species not tested.

## Antibody description

SHMT1 Rabbit Polyclonal antibody. Positive IF detected in HepG2 cells. Positive WB detected in human kidney tissue, HeLa cells, HepG2 cells, human liver tissue, mouse kidney tissue. Observed molecular weight by Western-blot: 53 kDa

## Preparation

This antibody was obtained by immunization of SHMT1 recombinant protein (Accession Number: NM\_004169). Purification method: Antigen affinity purified.

## Formulation

PBS with 0.02% sodium azide and 50% glycerol pH 7.3.

## Storage

Store at -20°C. DO NOT ALIQUOT

## Clonality

Polyclonal

## Ig Type

Rabbit IgG

## Applications

ELISA, WB, IF

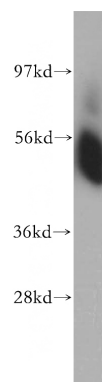
## Dilutions

Recommended Dilution:

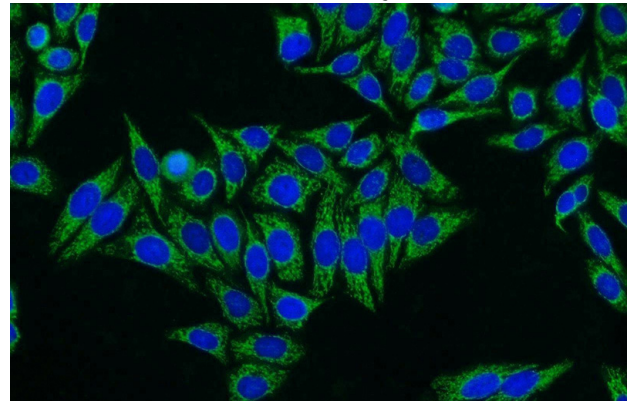
WB: 1:500-1:5000

IF: 1:10-1:100

## Validations



human kidney tissue were subjected to SDS PAGE followed by western blot with Catalog No:115276(SHMT1 antibody) at dilution of 1:500



Immunofluorescent analysis of HepG2 cells using Catalog No:115276(SHMT1 Antibody) at dilution of 1:25 and Alexa Fluor 594-conjugated AffiniPure Goat Anti-Rabbit IgG(H+L)