

SETD7 antibody



Catalog Number: 115224

Product name

SETD7 antibody

Specificity

Human, Mouse, Rat; other species not tested.

Antibody description

SETD7 Rabbit Polyclonal antibody. Positive IF detected in HeLa cells. Positive WB detected in mouse kidney tissue, C6 cells, HeLa cells, mouse brain tissue. Observed molecular weight by Western-blot: 48-50 kDa

Preparation

This antibody was obtained by immunization of SETD7 recombinant protein (Accession Number: NM_030648). Purification method: Antigen affinity purified.

Formulation

PBS with 0.1% sodium azide and 50% glycerol pH 7.3.

Storage

Store at -20°C. DO NOT ALIQUOT

Clonality

Polyclonal

Ig Type

Rabbit IgG

Applications

ELISA, WB, IF

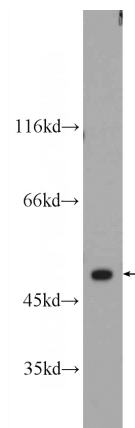
Dilutions

Recommended Dilution:

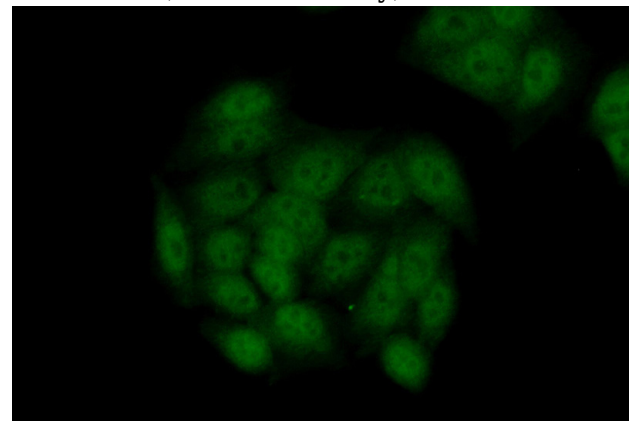
WB: 1:500-1:5000

IF: 1:20-1:200

Validations



mouse kidney tissue were subjected to SDS PAGE followed by western blot with Catalog No:115224(SETD7 Antibody) at dilution of 1:1000



Immunofluorescent analysis of (10% Formaldehyde) fixed HeLa cells using Catalog No:115224(SETD7 Antibody) at dilution of 1:50 and Alexa Fluor 488-conjugated AffiniPure Goat Anti-Rabbit IgG(H+L)