

SETD1B antibody



Catalog Number: 115221

Product name

SETD1B antibody

IP: 1:200-1:1000

IHC: 1:20-1:200

Specificity

Human, Mouse; other species not tested.

Antibody description

SETD1B Rabbit Polyclonal antibody. Positive WB detected in human brain tissue, MCF7 cells, mouse liver tissue. Positive IP detected in MCF-7 cells. Positive IHC detected in human breast cancer tissue, human ovary tumor tissue. Observed molecular weight by Western-blot: 250-260 kDa, 450 kDa

Preparation

This antibody was obtained by immunization of Peptide (Accession Number: NM_015048). Purification method: Antigen affinity purified.

Formulation

PBS with 0.02% sodium azide and 50% glycerol pH 7.3.

Storage

Store at -20°C. DO NOT ALIQUOT

Clonality

Polyclonal

Ig Type

Rabbit IgG

Applications

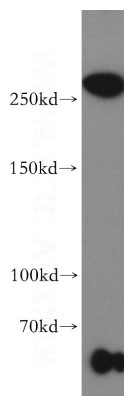
ELISA, WB, IP, IHC

Dilutions

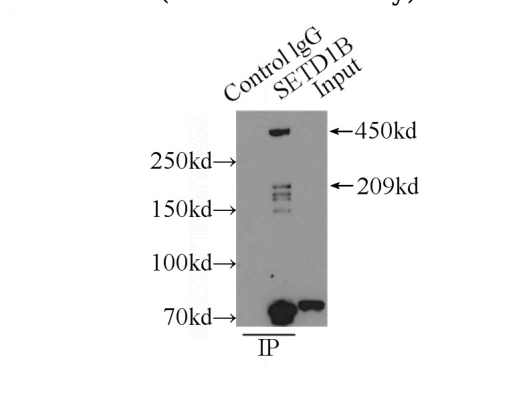
Recommended Dilution:

WB: 1:200-1:2000

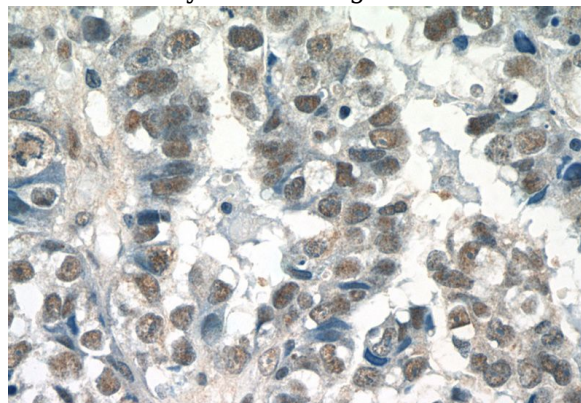
Validations



human brain tissue were subjected to SDS PAGE followed by western blot with Catalog No:115221(SETD1B antibody) at dilution of 1:800



IP Result of anti-SETD1B (IP:Catalog No:115221, 5ug; Detection:Catalog No:115221 1:300) with MCF-7 cells lysate 3250ug.

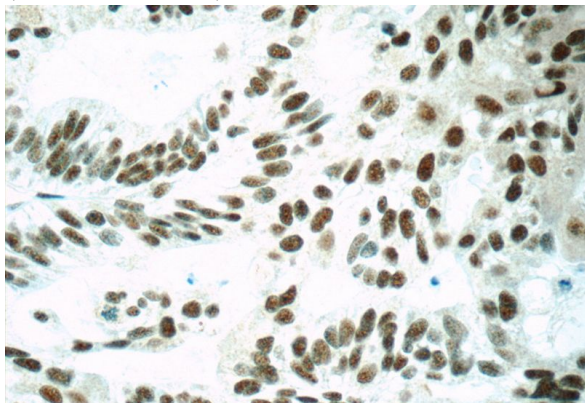


Immunohistochemistry of paraffin-embedded human breast cancer tissue slide using Catalog

SETD1B antibody

Catalog Number: 115221

No:115221(SETD1B Antibody) at dilution of 1:50
(under 40x lens)



Immunohistochemistry of paraffin-embedded
human ovary tumor tissue slide using Catalog
No:115221(SETD1B Antibody) at dilution of 1:50
(under 40x lens)