

# SERPINB2 antibody



Catalog Number: 115203

## Product name

SERPINB2 antibody

IP: 1:200-1:1000

IHC: 1:20-1:200

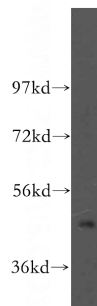
## Specificity

Human; other species not tested.

## Antibody description

SERPINB2 Rabbit Polyclonal antibody. Positive IHC detected in human endometrial cancer tissue. Positive IP detected in Jurkat cells. Positive WB detected in Jurkat cells, human liver tissue. Observed molecular weight by Western-blot: 45-47 kDa

## Validations



## Preparation

This antibody was obtained by immunization of SERPINB2 recombinant protein (Accession Number: XM\_024451192). Purification method: Antigen affinity purified.

Jurkat cells were subjected to SDS PAGE followed by western blot with Catalog No:115203(SERPINB2 antibody) at dilution of

## Formulation

PBS with 0.02% sodium azide and 50% glycerol pH 7.3.

## Storage

Store at -20°C. DO NOT ALIQUOT

## Clonality

Polyclonal

## Ig Type

Rabbit IgG

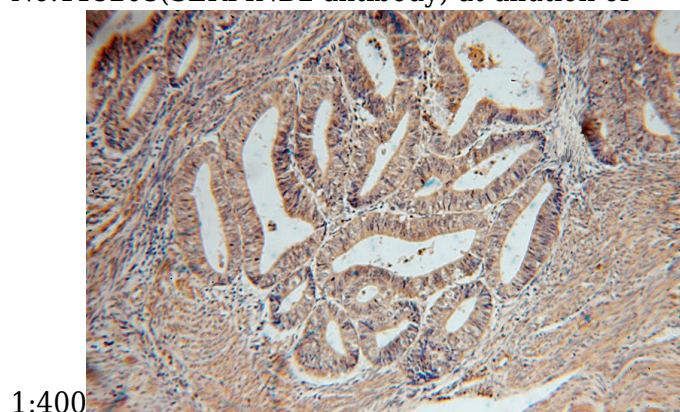
## Applications

ELISA, WB, IHC, IP

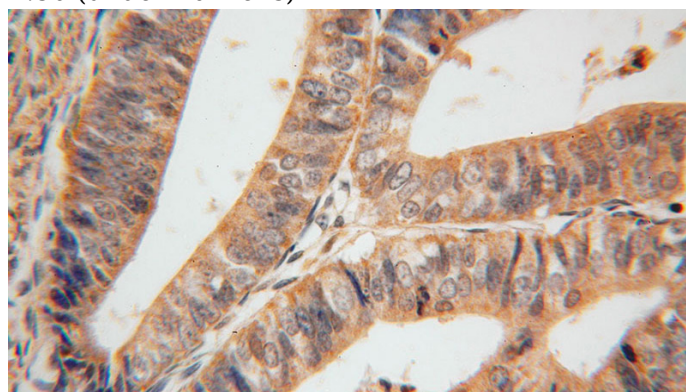
## Dilutions

Recommended Dilution:

WB: 1:200-1:2000



Immunohistochemical of paraffin-embedded human endometrial cancer using Catalog No:115203(SERPINB2 antibody) at dilution of 1:50 (under 10x lens)



Immunohistochemical of paraffin-embedded

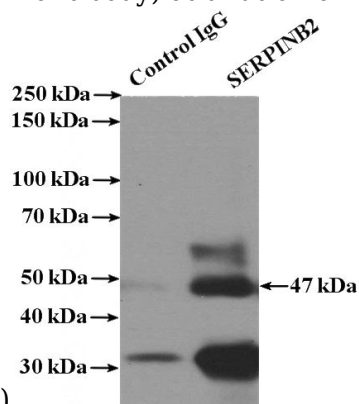
# SERPINB2 antibody



Catalog Number: 115203

human endometrial cancer using Catalog No:115203(SERPINB2 antibody) at dilution of

IP Result of anti-SERPINB2 (IP:Catalog No:115203, 4ug; Detection:Catalog No:115203 1:300) with Jurkat cells lysate 3600ug.



1:50 (under 40x lens)