

SH2D1A antibody



Catalog Number: 115178

Product name

SH2D1A antibody

Immunogen

[Human SH2D1A Recombinant protein \(GST tag\)](#)

Specificity

Human, Mouse, Rat; other species not tested.

Antibody description

SH2D1A Rabbit Polyclonal antibody. Positive WB detected in mouse thymus tissue. Observed molecular weight by Western-blot: 16kd

Preparation

This antibody was obtained by immunization of SH2D1A recombinant protein (Accession Number: NM_002351). Purification method: Antigen affinity purified.

Formulation

PBS with 0.1% sodium azide and 50% glycerol pH 7.3.

Storage

Store at -20°C. DO NOT ALIQUOT

Clonality

Polyclonal

Ig Type

Rabbit IgG

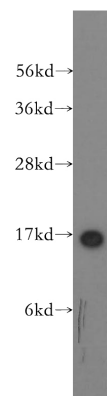
Applications

ELISA, WB

Dilutions

Recommended Dilution:
WB: 1:500-1:5000

Validations



mouse thymus tissue were subjected to SDS PAGE followed by western blot with Catalog No:115178(SH2D1A antibody) at dilution of 1:500