

# SGSH antibody

Catalog Number: 115173

## Product name

SGSH antibody

WB: 1:200-1:2000

IHC: 1:20-1:200

## Immunogen

[Human SGSH Recombinant protein \(GST tag\)](#)

## Specificity

Human, Mouse, Rat; other species not tested.

## Antibody description

SGSH Rabbit Polyclonal antibody. Positive WB detected in HEK-293 cells, Transfected HEK-293 cells. Positive IHC detected in human pancreas cancer tissue, human liver cancer tissue.

## Preparation

This antibody was obtained by immunization of SGSH recombinant protein (Accession Number: NM\_000199). Purification method: Antigen affinity purified.

## Formulation

PBS with 0.02% sodium azide and 50% glycerol pH 7.3.

## Storage

Store at -20°C. DO NOT ALIQUOT

## Clonality

Polyclonal

## Ig Type

Rabbit IgG

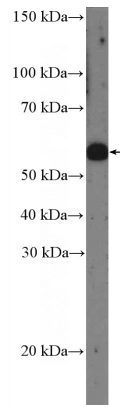
## Applications

ELISA, IHC, WB

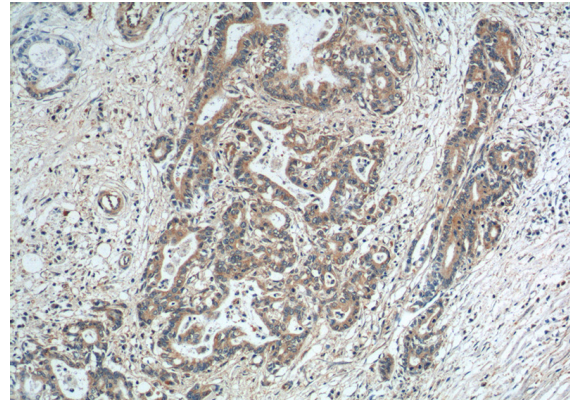
## Dilutions

Recommended Dilution:

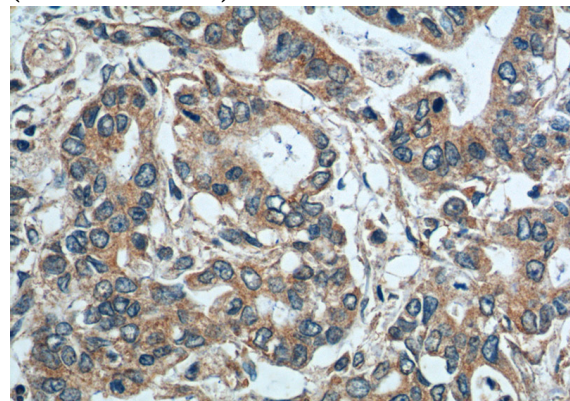
## Validations



HEK-293 cells were subjected to SDS PAGE followed by western blot with Catalog No:115173(SGSH Antibody) at dilution of 1:600



Immunohistochemistry of paraffin-embedded human pancreas cancer tissue slide using Catalog No:115173(SGSH Antibody) at dilution of 1:200 (under 10x lens).



Immunohistochemistry of paraffin-embedded

# SGSH antibody



Catalog Number: 115173

---

human pancreas cancer tissue slide using Catalog No:115173(SGSH Antibody) at dilution of 1:200 (under 40x lens).