

# SEPX1 antibody

Catalog Number: 115124

## Product name

SEPX1 antibody

## Immunogen

[Human SEPX1 Recombinant protein \(GST tag\)](#)

## Specificity

Human, Mouse, Rat; other species not tested.

## Antibody description

SEPX1 Rabbit Polyclonal antibody. Positive IHC detected in mouse kidney tissue.

## Preparation

This antibody was obtained by immunization of SEPX1 recombinant protein (Accession Number: NM\_016332). Purification method: Antigen affinity purified.

## Formulation

PBS with 0.1% sodium azide and 50% glycerol pH 7.3.

## Storage

Store at -20°C. DO NOT ALIQUOT

## Clonality

Polyclonal

## Ig Type

Rabbit IgG

## Applications

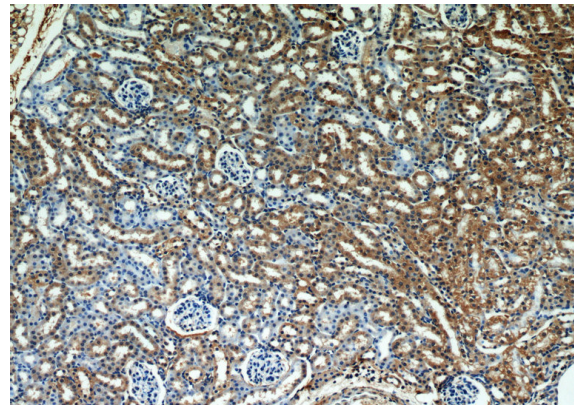
ELISA, IHC

## Dilutions

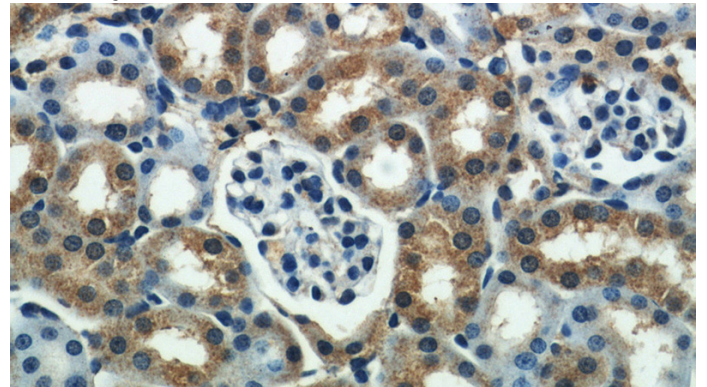
Recommended Dilution:

IHC: 1:20-1:200

## Validations



Immunohistochemical of paraffin-embedded mouse kidney using Catalog No:115124(SEPX1 antibody) at dilution of 1:50 (under 10x lens)



Immunohistochemical of paraffin-embedded mouse kidney using Catalog No:115124(SEPX1 antibody) at dilution of 1:50 (under 40x lens)