

# SEPT9 antibody

Catalog Number: 115123

## Product name

SEPT9 antibody

## Specificity

Human, Mouse, Rat; other species not tested.

## Antibody description

SEPT9 Rabbit Polyclonal antibody. Positive WB detected in mouse thymus tissue, C6 cells, HeLa cells, mouse brain tissue, mouse spleen tissue. Positive IP detected in mouse brain tissue. Positive FC detected in HepG2 cells. Positive IHC detected in human pancreas cancer tissue, human testis tissue. Positive IF detected in HepG2 cells, Hela cells, hTERT-RPE cells. Observed molecular weight by Western-blot: 65kd, 38-40kd

## Preparation

This antibody was obtained by immunization of SEPT9 recombinant protein (Accession Number: NM\_006640). Purification method: Antigen affinity purified.

## Formulation

PBS with 0.1% sodium azide and 50% glycerol pH 7.3.

## Storage

Store at -20°C. DO NOT ALIQUOT

## Clonality

Polyclonal

## Ig Type

Rabbit IgG

## Applications

ELISA, WB, IHC, IF, FC, IP

## Dilutions

Recommended Dilution:

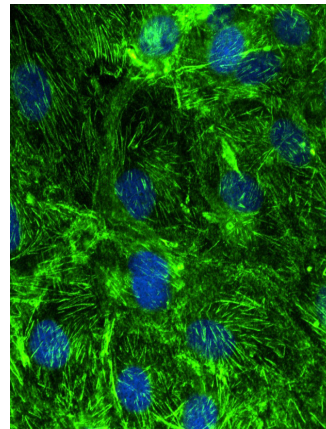
WB: 1:200-1:2000

IP: 1:500-1:5000

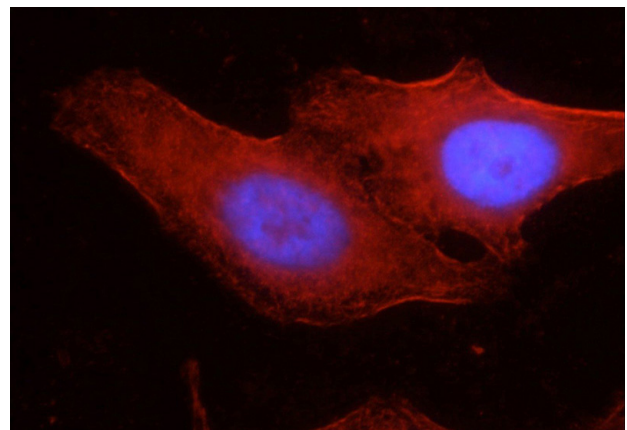
IHC: 1:20-1:200

IF: 1:20-1:200

## Validations



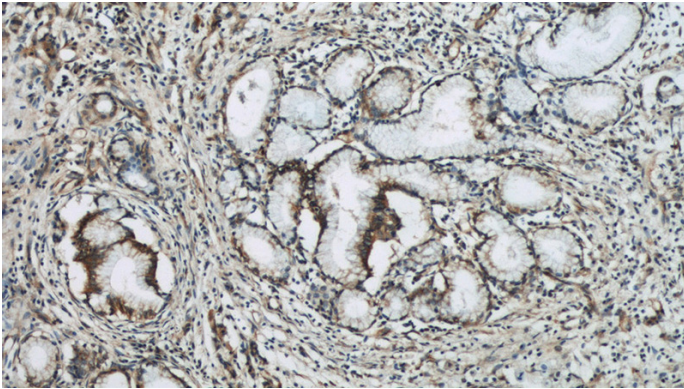
IF result of anti-SEPT9 (Catalog No:115123, 1:200) with hTERT-RPE cell by Moshe Kim (laboratory of Dr. William S Trimble, University of Toronto). Green: SEPT9. Blue: DNA. Fixation in methanol.



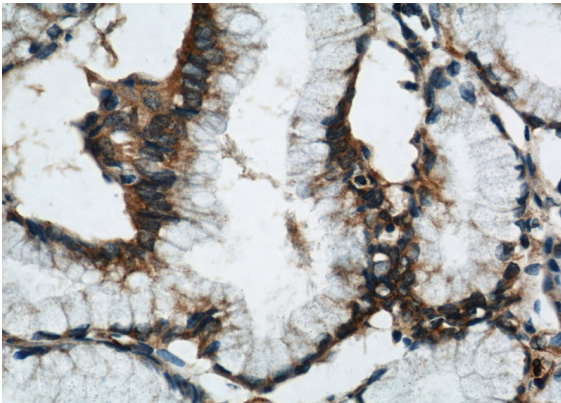
Immunofluorescent analysis of HepG2 cells, using SEPT9 antibody Catalog No:115123 at 1:50 dilution and Rhodamine-labeled goat anti-rabbit IgG (red). Blue pseudocolor = DAPI (fluorescent DNA dye).

# SEPT9 antibody

Catalog Number: 115123

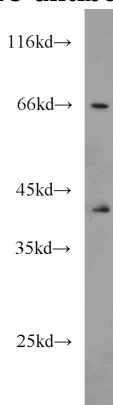


Immunohistochemical of paraffin-embedded human pancreas cancer using Catalog No:115123(SEPT9 antibody) at dilution of 1:50 (under 10x lens)

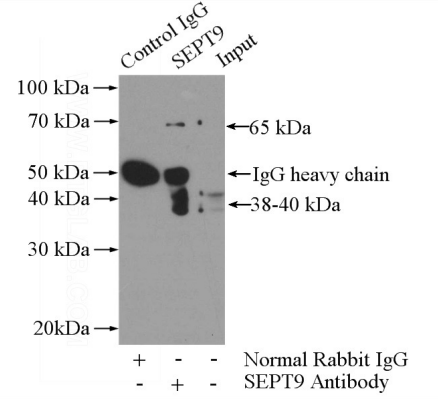


Immunohistochemical of paraffin-embedded human pancreas cancer using Catalog No:115123(SEPT9 antibody) at dilution of 1:50

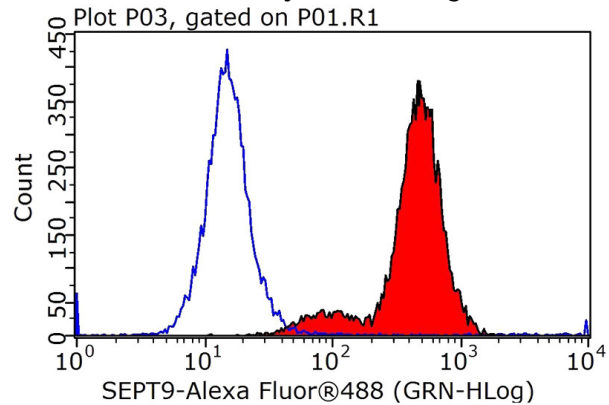
(under 40x lens)



mouse thymus tissue were subjected to SDS PAGE followed by western blot with Catalog No:115123(SEPT9 antibody) at dilution of 1:600



IP Result of anti-SEPT9 (IP:Catalog No:115123, 4ug; Detection:Catalog No:115123 1:1000) with mouse brain tissue lysate 4000ug.



1X10<sup>6</sup> HepG2 cells were stained with 0.2ug SEPT9 antibody (Catalog No:115123, red) and control antibody (blue). Fixed with 90% MeOH blocked with 3% BSA (30 min). Alexa Fluor 488-conjugated AffiniPure Goat Anti-Rabbit IgG(H+L) with dilution 1:1000.