

SARA antibody



Catalog Number: 115069

Product name

SARA antibody

IP: 1:500-1:5000

IHC: 1:20-1:200

Specificity

Human, Mouse, Rat; other species not tested.

Antibody description

SARA Rabbit Polyclonal antibody. Positive IHC detected in human kidney tissue. Positive WB detected in mouse brain tissue, HeLa cells, human brain tissue, MCF7 cells. Positive IP detected in mouse brain tissue. Observed molecular weight by Western-blot: 156 kDa

Preparation

This antibody was obtained by immunization of SARA recombinant protein (Accession Number: XM_011542437). Purification method: Antigen affinity purified.

Formulation

PBS with 0.02% sodium azide and 50% glycerol pH 7.3.

Storage

Store at -20°C. DO NOT ALIQUOT

Clonality

Polyclonal

Ig Type

Rabbit IgG

Applications

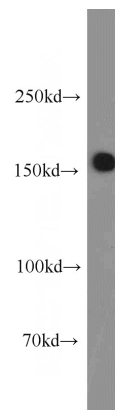
ELISA, WB, IHC, IP

Dilutions

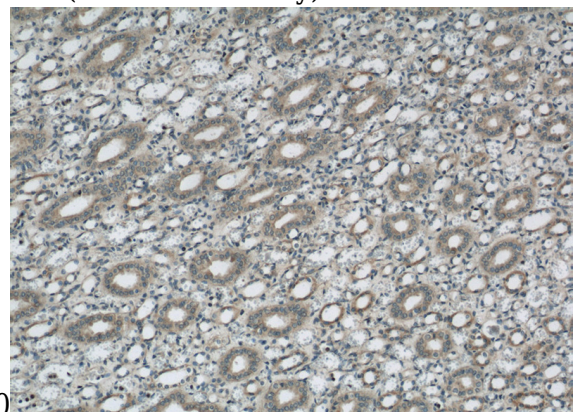
Recommended Dilution:

WB: 1:500-1:5000

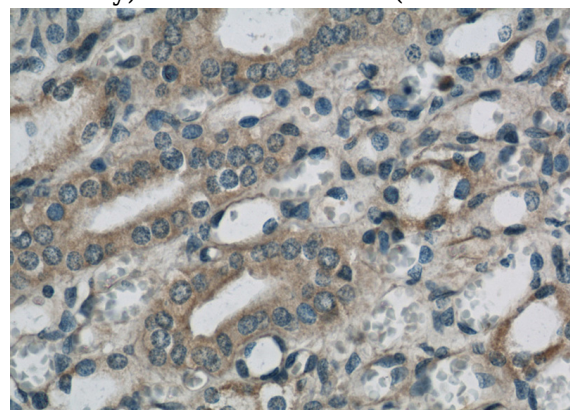
Validations



mouse brain tissue were subjected to SDS PAGE followed by western blot with Catalog No:115069(ZFYVE9 antibody) at dilution of



Immunohistochemical of paraffin-embedded human kidney using Catalog No:115069(ZFYVE9 antibody) at dilution of 1:50 (under 10x lens)



Immunohistochemical of paraffin-embedded

Catalog Number: 115069

human kidney using Catalog No:115069(ZFYVE9 antibody) at dilution of 1:50 (under 40x lens)

IP Result of anti-ZFYVE9 (IP:Catalog No:115069, 5ug; Detection:Catalog No:115069 1:1000) with mouse brain tissue lysate 5000ug.

