

SAE1 antibody

Catalog Number: 115042

Product name

SAE1 antibody

Immunogen

[Human SAE1 Recombinant protein \(GST tag\)](#)

Specificity

Human, Mouse, Rat; other species not tested.

Antibody description

SAE1 Rabbit Polyclonal antibody. Positive WB detected in A431 cells, A549 cells, COLO 320 cells, HEK-293 cells, HeLa cells. Positive IF detected in HeLa cells. Positive IHC detected in human colon cancer tissue, human skin cancer tissue. Observed molecular weight by Western-blot: 38 kDa

Preparation

This antibody was obtained by immunization of SAE1 recombinant protein (Accession Number: NM_005500). Purification method: Antigen affinity purified.

Formulation

PBS with 0.1% sodium azide and 50% glycerol pH 7.3.

Storage

Store at -20°C. DO NOT ALIQUOT

Clonality

Polyclonal

Ig Type

Rabbit IgG

Applications

ELISA, WB, IF, IHC

Dilutions

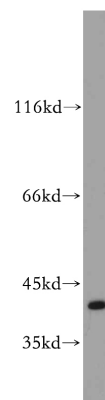
Recommended Dilution:

WB: 1:200-1:1000

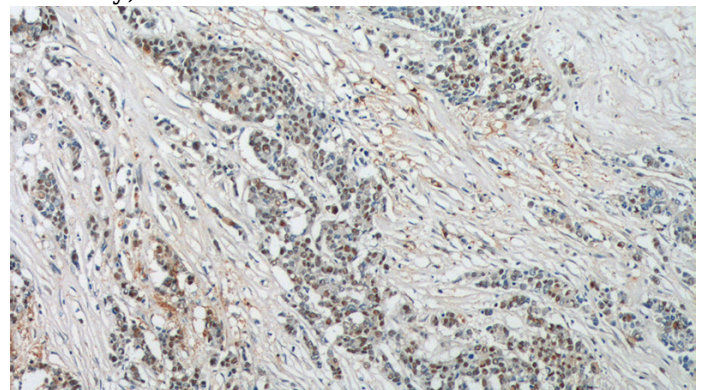
IHC: 1:20-1:200

IF: 1:20-1:200

Validations



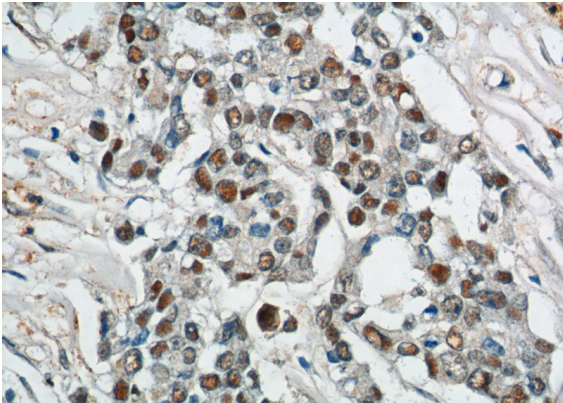
A431 cells were subjected to SDS PAGE followed by western blot with Catalog No:115042(SAE1 antibody) at dilution of 1:300



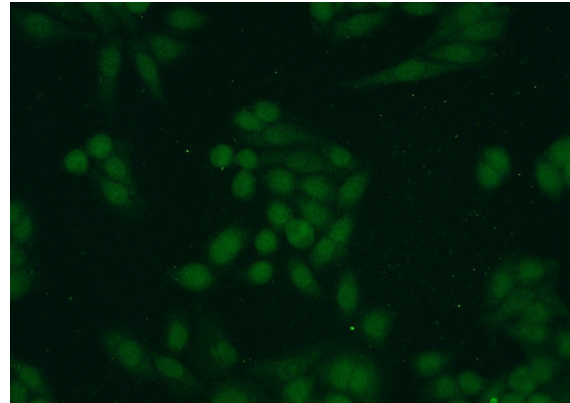
Immunohistochemistry of paraffin-embedded human colon cancer tissue slide using Catalog No:115042(SAE1 Antibody) at dilution of 1:200 (under 10x lens).

SAE1 antibody

Catalog Number: 115042



Immunohistochemistry of paraffin-embedded human colon cancer tissue slide using Catalog No:115042(SAE1 Antibody) at dilution of 1:200 (under 40x lens).



Immunofluorescent analysis of HeLa cells using Catalog No:115042(SAE1 Antibody) at dilution of 1:50 and Alexa Fluor 488-conjugated AffiniPure Goat Anti-Rabbit IgG(H+L)