

# Sclerostin antibody

Catalog Number: 114998

## Product name

Sclerostin antibody

WB: 1:500-1:5000

IHC: 1:20-1:200

## Immunogen

[Human SOST Recombinant protein \(His tag\)](#)

## Specificity

Human; other species not tested.

## Antibody description

Sclerostin Rabbit Polyclonal antibody. Positive IHC detected in human liver tissue. Positive WB detected in Transfected HEK-293 cells.

## Preparation

This antibody was obtained by immunization of Sclerostin recombinant protein (Accession Number: NM\_025237). Purification method: Antigen affinity purified.

## Formulation

PBS with 0.02% sodium azide and 50% glycerol pH 7.3.

## Storage

Store at -20°C. DO NOT ALIQUOT

## Clonality

Polyclonal

## Ig Type

Rabbit IgG

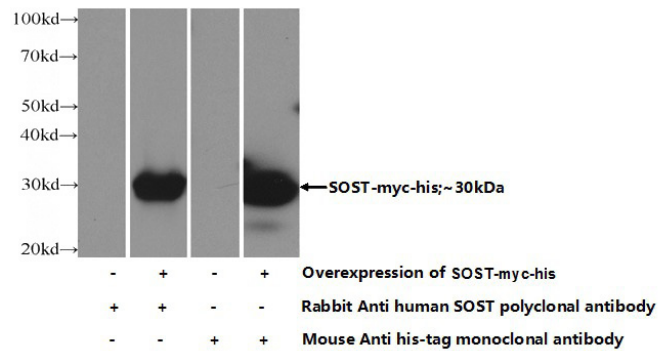
## Applications

ELISA, WB, IHC

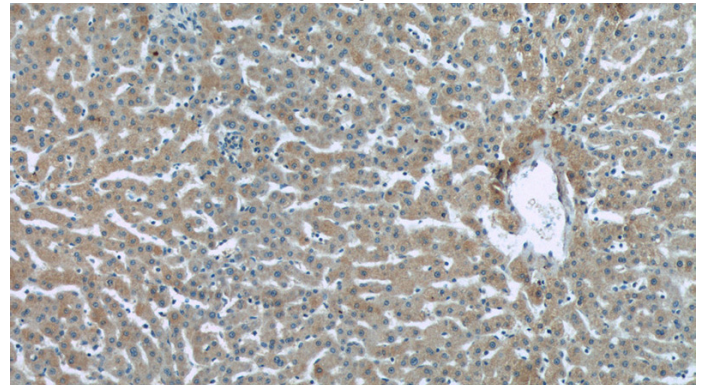
## Dilutions

Recommended Dilution:

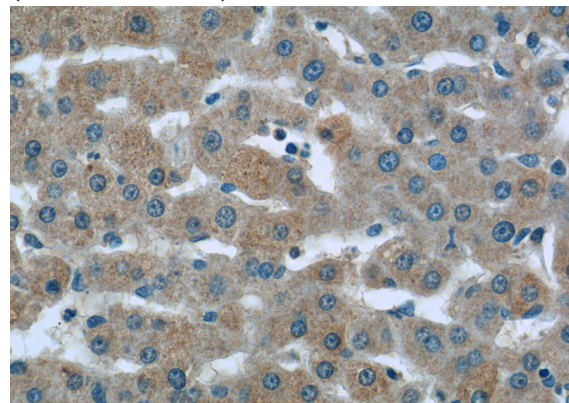
## Validations



Transfected HEK-293 cells were subjected to SDS PAGE followed by western blot with Catalog No:114998(SOST Antibody) at dilution of 1:1000



Immunohistochemistry of paraffin-embedded human liver tissue slide using Catalog No:114998(SOST Antibody) at dilution of 1:50 (under 10x lens)



Immunohistochemistry of paraffin-embedded human liver tissue slide using Catalog

# Sclerostin antibody



Catalog Number: 114998

---

No:114998(SOST Antibody) at dilution of 1:50 (under 40x lens)