

# SBDS antibody

Catalog Number: 114979

## Product name

SBDS antibody

IP: 1:200-1:1000

IHC: 1:20-1:200

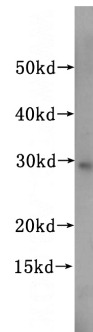
## Specificity

Human, Mouse, Rat; other species not tested.

## Antibody description

SBDS Rabbit Polyclonal antibody. Positive IHC detected in human pancreas tissue. Positive WB detected in HL-60 cells, SH-SY5Y cells. Positive IP detected in HL-60 cells. Observed molecular weight by Western-blot: 29 kDa

## Validations



## Preparation

This antibody was obtained by immunization of SBDS recombinant protein (Accession Number: NM\_016038). Purification method: Antigen affinity purified.

HL-60 cells were subjected to SDS PAGE followed by western blot with Catalog No:114979(SBDS antibody) at dilution of 1:500

## Formulation

PBS with 0.02% sodium azide and 50% glycerol pH 7.3.

## Storage

Store at -20°C. DO NOT ALIQUOT

## Clonality

Polyclonal

## Ig Type

Rabbit IgG

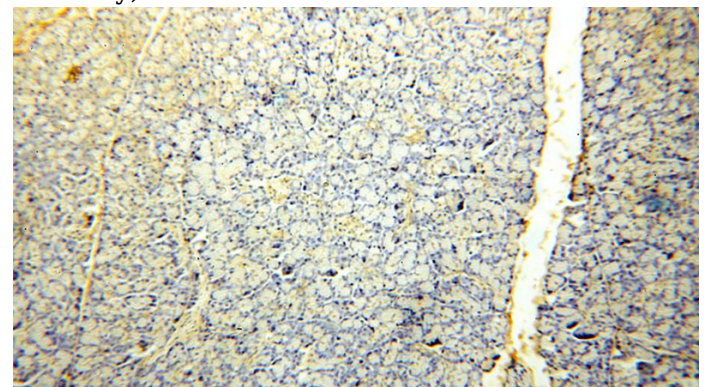
## Applications

ELISA, WB, IHC, IP

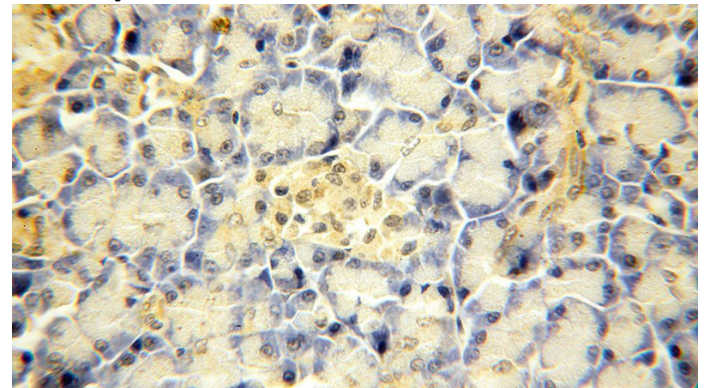
## Dilutions

Recommended Dilution:

WB: 1:200-1:2000



Immunohistochemical of paraffin-embedded human pancreas using Catalog No:114979(SBDS antibody) at dilution of 1:50 (under 10x lens)

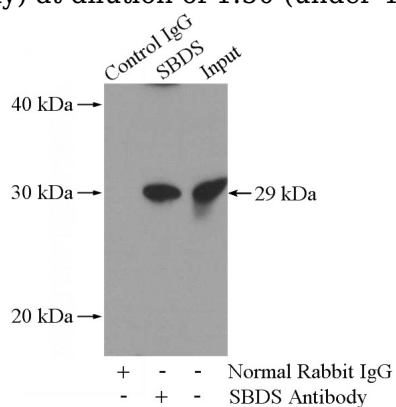


Immunohistochemical of paraffin-embedded human pancreas using Catalog No:114979(SBDS

# SBDS antibody

Catalog Number: 114979

antibody) at dilution of 1:50 (under 40x lens)



IP Result of anti-SBDS (IP:Catalog No:114979, 4ug; Detection:Catalog No:114979 1:300) with HL-60 cells lysate 3040ug.