

# RUVBL1 antibody



Catalog Number: 114939

## Product name

RUVBL1 antibody

WB: 1:500-1:5000

IP: 1:500-1:5000

## Specificity

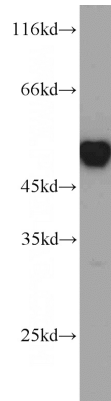
Human, Mouse, Rat; other species not tested.

IHC: 1:20-1:200

## Antibody description

RUVBL1 Rabbit Polyclonal antibody. Positive WB detected in HEK-293 cells, HeLa cells, HT-1080 cells, K-562 cells, mouse heart tissue, NIH/3T3 cells, rat testis tissue. Positive IP detected in HeLa cells. Positive IHC detected in human ovary tumor tissue. Observed molecular weight by Western-blot: 50kd

## Validations



## Preparation

This antibody was obtained by immunization of RUVBL1 recombinant protein (Accession Number: NM\_003707). Purification method: Antigen affinity purified.

HEK-293 cells were subjected to SDS PAGE followed by western blot with Catalog No:114939(RUVBL1 antibody) at dilution of 1:1000

## Formulation

PBS with 0.1% sodium azide and 50% glycerol pH 7.3.

## Storage

Store at -20°C. DO NOT ALIQUOT

## Clonality

Polyclonal

## Ig Type

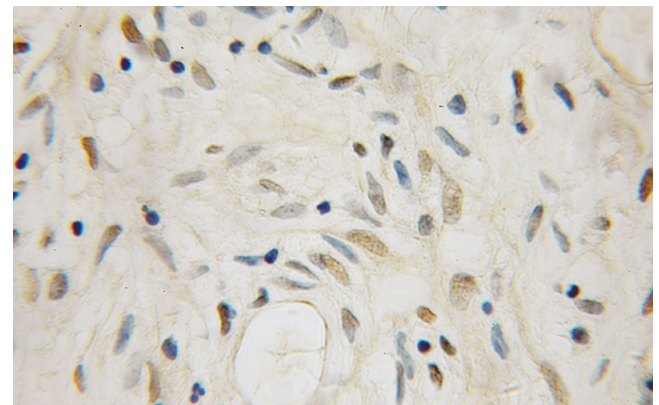
Rabbit IgG

## Applications

ELISA, WB, IHC, IP

## Dilutions

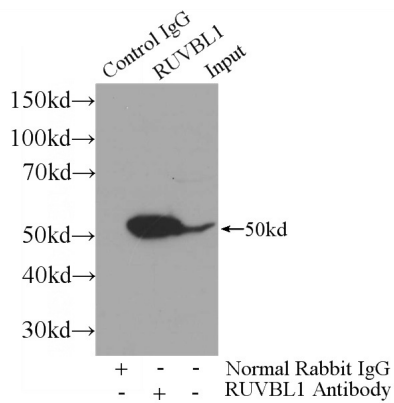
Recommended Dilution:



Immunohistochemical of paraffin-embedded human ovary tumor using Catalog No:114939(RUVBL1 antibody) at dilution of 1:50 (under 10x lens)

# RUVBL1 antibody

Catalog Number: 114939



IP Result of anti-RUVBL1 (IP:Catalog No:114939, 3ug; Detection:Catalog No:114939 1:1000) with HeLa cells lysate 800ug.