

# RRBP1 antibody



Catalog Number: 114922

## Product name

RRBP1 antibody

## Immunogen

[Human RRBP1 Recombinant protein \(GST tag\)](#)

## Specificity

Human, Mouse; other species not tested.

## Antibody description

RRBP1 Rabbit Polyclonal antibody. Positive IF detected in NIH/3T3 cells. Positive IHC detected in human lung cancer tissue, human pancreas tissue. Positive WB detected in mouse pancreas tissue, NIH/3T3 cells. Observed molecular weight by Western-blot: 109 kDa

## Preparation

This antibody was obtained by immunization of RRBP1 recombinant protein (Accession Number: BC128577). Purification method: Antigen affinity purified.

## Formulation

PBS with 0.02% sodium azide and 50% glycerol pH 7.3.

## Storage

Store at -20°C. DO NOT ALIQUOT

## Clonality

Polyclonal

## Ig Type

Rabbit IgG

## Applications

ELISA, WB, IHC, IF

## Dilutions

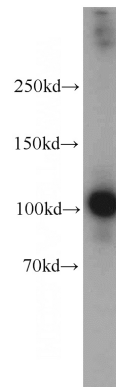
Recommended Dilution:

WB: 1:200-1:2000

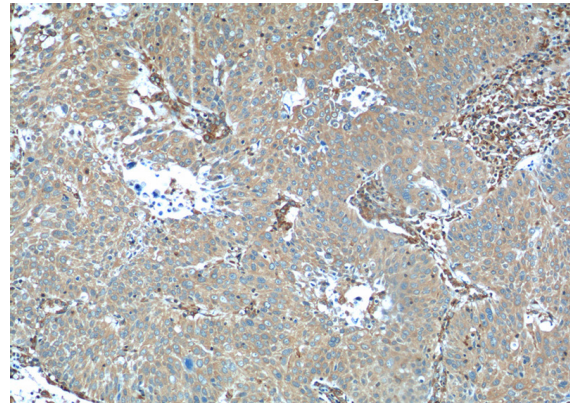
IHC: 1:20-1:200

IF: 1:20-1:200

## Validations



mouse pancreas tissue were subjected to SDS PAGE followed by western blot with Catalog No:114922(RRBP1 antibody) at dilution of 1:800

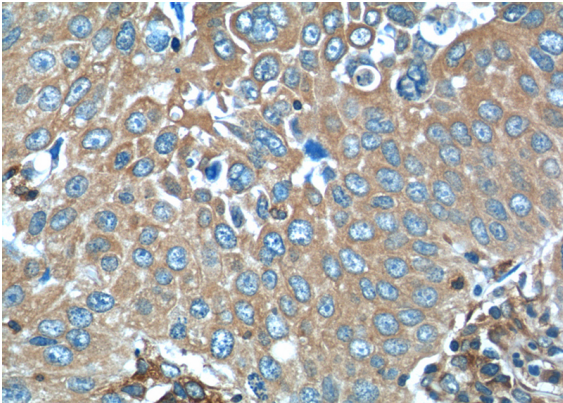


Immunohistochemistry of paraffin-embedded human lung cancer tissue slide using Catalog No:114922(RRBP1 Antibody) at dilution of 1:50 (under 10x lens)

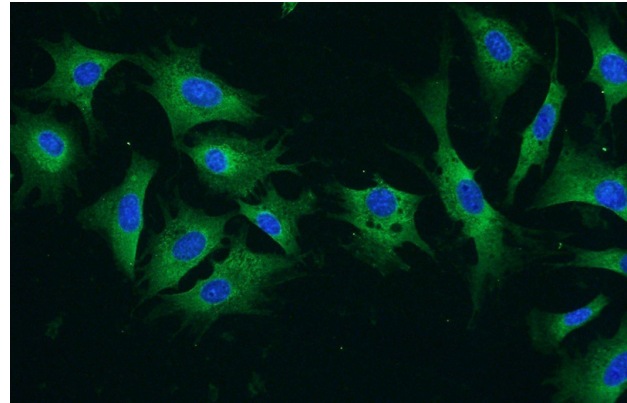
# RRBP1 antibody

Catalog Number: 114922

---



Immunohistochemistry of paraffin-embedded human lung cancer tissue slide using Catalog No:114922(RRBP1 Antibody) at dilution of 1:50 (under 40x lens)



Immunofluorescent analysis of NIH/3T3 cells using Catalog No:114922(RRBP1 Antibody) at dilution of 1:50 and Alexa Fluor 488-conjugated AffiniPure Goat Anti-Rabbit IgG(H+L)