

# RPRD1B antibody

Catalog Number: 114825

## Product name

RPRD1B antibody

## Specificity

Human; other species not tested.

## Antibody description

RPRD1B Rabbit Polyclonal antibody. Positive IF detected in HeLa cells. Positive WB detected in HeLa cells, Jurkat cells. Observed molecular weight by Western-blot: 37 kDa

## Preparation

This antibody was obtained by immunization of RPRD1B recombinant protein (Accession Number: NM\_021215). Purification method: Antigen affinity purified.

## Formulation

PBS with 0.1% sodium azide and 50% glycerol pH 7.3.

## Storage

Store at -20°C. DO NOT ALIQUOT

## Clonality

Polyclonal

## Ig Type

Rabbit IgG

## Applications

ELISA, WB, IF

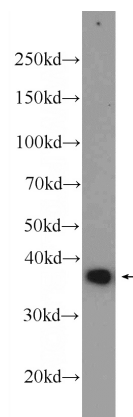
## Dilutions

Recommended Dilution:

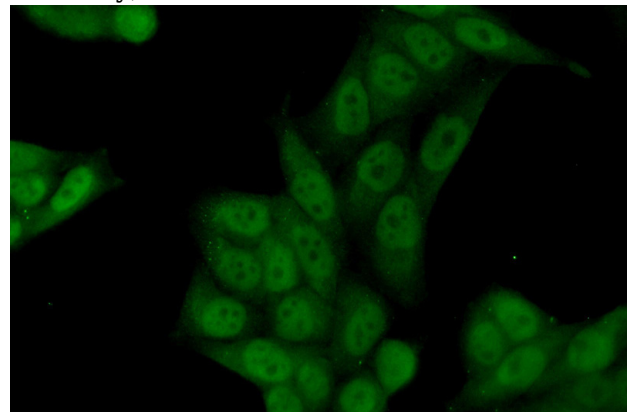
WB: 1:500-1:5000

IF: 1:50-1:500

## Validations



HeLa cells were subjected to SDS PAGE followed by western blot with Catalog No:114825(RPRD1B Antibody) at dilution of 1:1000



Immunofluorescent analysis of (10% Formaldehyde) fixed HeLa cells using Catalog No:114825(RPRD1B Antibody) at dilution of 1:50 and Alexa Fluor 488-conjugated AffiniPure Goat Anti-Rabbit IgG(H+L)