

RFC3 antibody



Catalog Number: 114624

Product name

Polyclonal

RFC3 antibody

Ig Type

Specificity

Rabbit IgG

human, mouse, rat; other species not tested.

Applications

Antibody description

ELISA, WB

RFC3 Rabbit Polyclonal antibody. Positive WB detected in human liver tissue, HeLa cells, human heart tissue. Observed molecular weight by Western-blot: 38kd

Dilutions

Recommended Dilution:

WB: 1:500-1:5000

Preparation

This antibody was obtained by immunization of RFC3 recombinant protein (Accession Number: NM_002915). Purification method: Antigen affinity purified.

Validations

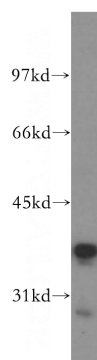
Formulation

PBS with 0.1% sodium azide and 50% glycerol pH 7.3.

Storage

Store at -20°C. DO NOT ALIQUOT

Clonality



human liver tissue were subjected to SDS PAGE followed by western blot with Catalog No:114624(RFC3 antibody) at dilution of 1:500