

# RAB3B antibody

Catalog Number: 114441

## Product name

RAB3B antibody

## Immunogen

[Human RAB3B Recombinant protein \(GST tag\)](#)

## Specificity

Human, Mouse, Rat; other species not tested.

## Antibody description

RAB3B Rabbit Polyclonal antibody. Positive WB detected in human brain tissue. Positive FC detected in HepG2 cells. Positive IHC detected in human colon cancer tissue, human pancreas tissue. Positive IF detected in HeLa cells. Observed molecular weight by Western-blot: 25kd

## Preparation

This antibody was obtained by immunization of RAB3B recombinant protein (Accession Number: XM\_017001958). Purification method: Antigen affinity purified.

## Formulation

PBS with 0.02% sodium azide and 50% glycerol pH 7.3.

## Storage

Store at -20°C. DO NOT ALIQUOT

## Clonality

Polyclonal

## Ig Type

Rabbit IgG

## Applications

ELISA, WB, IHC, FC, IF

## Dilutions

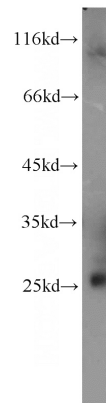
Recommended Dilution:

WB: 1:200-1:2000

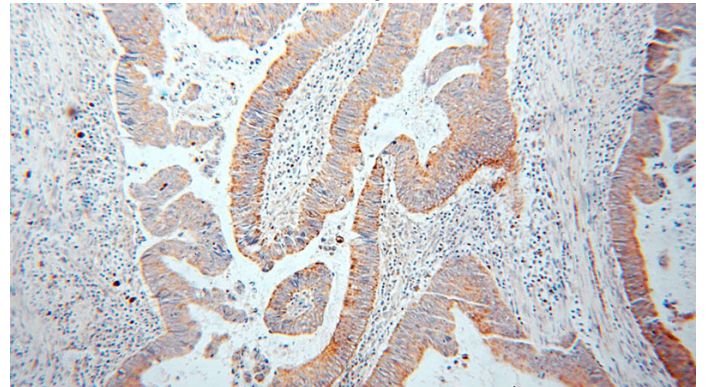
IHC: 1:20-1:200

IF: 1:20-1:200

## Validations



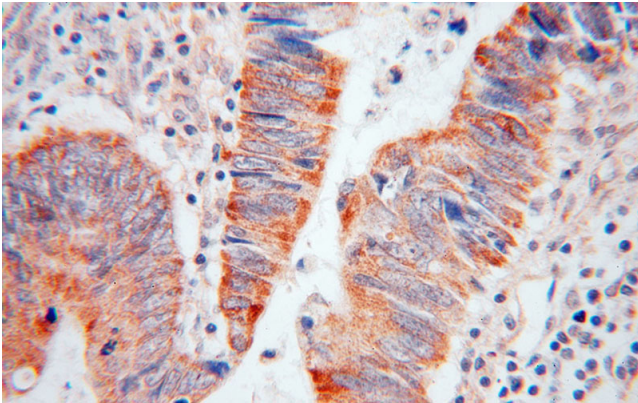
human brain tissue were subjected to SDS PAGE followed by western blot with Catalog No:114441(RAB3B antibody) at dilution of 1:800



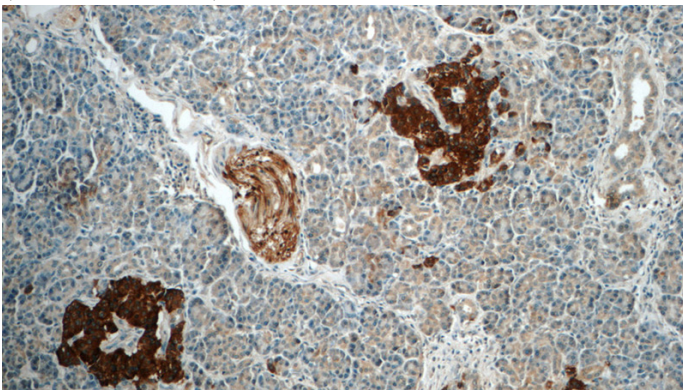
Immunohistochemical of paraffin-embedded human colon cancer using Catalog No:114441(RAB3B antibody) at dilution of 1:50 (under 10x lens)

# RAB3B antibody

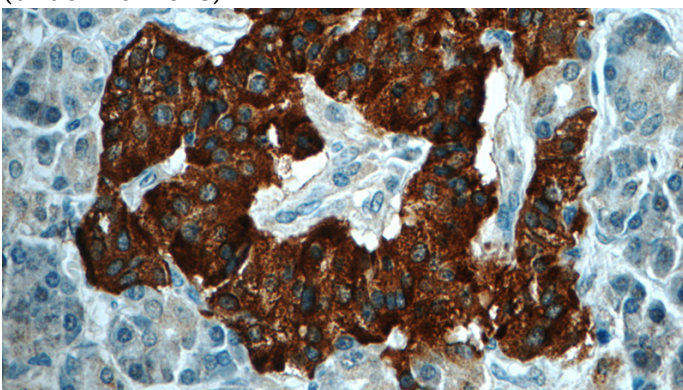
Catalog Number: 114441



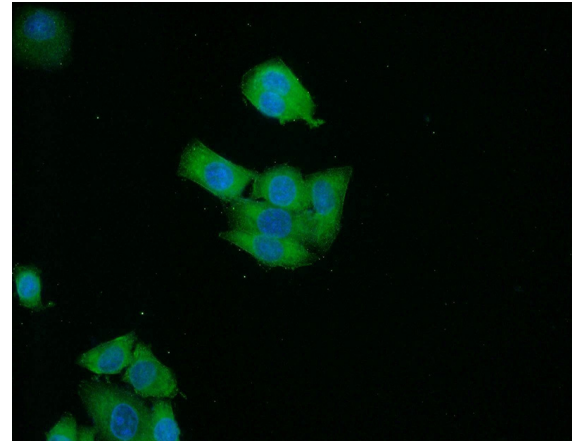
Immunohistochemical of paraffin-embedded human colon cancer using Catalog No:114441(RAB3B antibody) at dilution of 1:50 (under 40x lens)



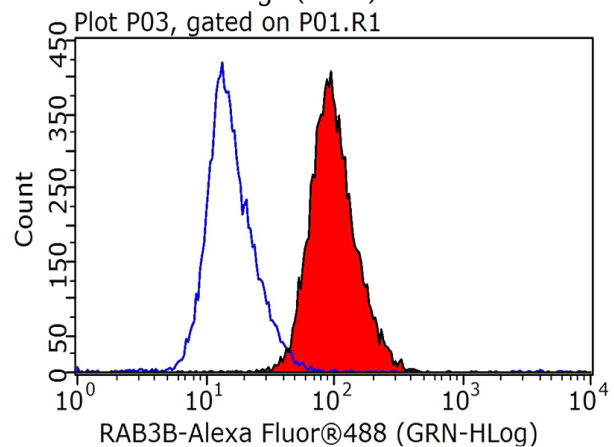
Immunohistochemistry of paraffin-embedded human pancreas tissue slide using Catalog No:114441(RAB3B Antibody) at dilution of 1:50 (under 10x lens)



Immunohistochemistry of paraffin-embedded human pancreas tissue slide using Catalog No:114441(RAB3B Antibody) at dilution of 1:50 (under 40x lens)



Immunofluorescent analysis of HeLa cells using Catalog No:114441(RAB3B Antibody) at dilution of 1:50 and Alexa Fluor 488-conjugated AffiniPure Goat Anti-Rabbit IgG(H+L)



1X10<sup>6</sup> HepG2 cells were stained with 0.2ug RAB3B antibody (Catalog No:114441, red) and control antibody (blue). Fixed with 90% MeOH blocked with 3% BSA (30 min). Alexa Fluor 488-conjugated AffiniPure Goat Anti-Rabbit IgG(H+L) with dilution 1:1000.