

PSMB7 antibody

Catalog Number: 114387

Product name

PSMB7 antibody

IHC: 1:20-1:200

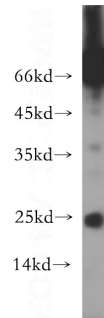
Specificity

Human, Mouse, Rat; other species not tested.

Antibody description

PSMB7 Rabbit Polyclonal antibody. Positive IHC detected in human colon cancer tissue, human breast cancer tissue, human colon tissue. Positive WB detected in Raji cells, A549 cells. Observed molecular weight by Western-blot: 25-27kd

Validations



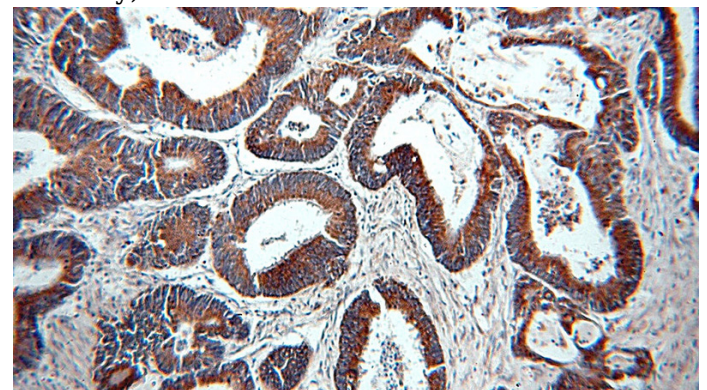
Preparation

This antibody was obtained by immunization of PSMB7 recombinant protein (Accession Number: NM_002799). Purification method: Antigen affinity purified.

Raji cells were subjected to SDS PAGE followed by western blot with Catalog No:114387(PSMB7 antibody) at dilution of 1:200

Formulation

PBS with 0.02% sodium azide and 50% glycerol pH 7.3.



Storage

Store at -20°C. DO NOT ALIQUOT

Clonality

Polyclonal

Ig Type

Rabbit IgG

Applications

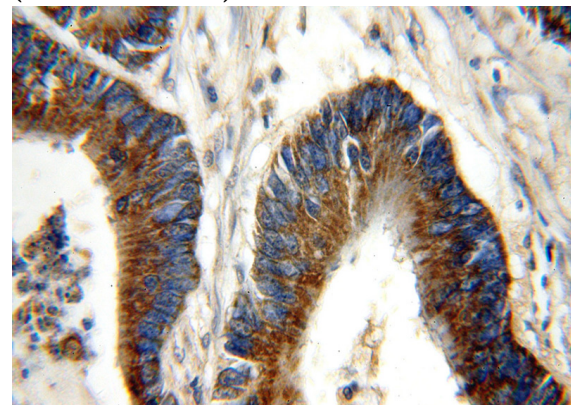
ELISA, WB, IHC

Dilutions

Recommended Dilution:

WB: 1:200-1:1000

Immunohistochemical of paraffin-embedded human colon cancer using Catalog No:114387(PSMB7 antibody) at dilution of 1:50 (under 10x lens)



Immunohistochemical of paraffin-embedded human colon cancer using Catalog No:114387(PSMB7 antibody) at dilution of 1:50

PSMB7 antibody



Catalog Number: 114387

(under 40x lens)