

PSMA3 antibody



Catalog Number: 114374

General Information

Product name:

PSMA3 antibody

Immunogen:

[Human PSMA3 Recombinant protein \(GST tag\)](#)

Applications:

ELISA, WB, IHC

Specificity:

Human, Mouse, Rat; other species not tested.

Antibody description:

PSMA3 Rabbit Polyclonal antibody. Positive IHC detected in human lymphoma tissue. Positive WB detected in human lung tissue, HeLa cells, NIH/3T3 cells. Observed molecular weight by Western-blot: 28kd

Properties

Preparation:

This antibody was obtained by immunization of PSMA3 recombinant protein (Accession Number: BC029402). Purification method: Antigen affinity purified.

Formulation:

PBS with 0.1% sodium azide and 50% glycerol pH 7.3.

Storage:

Store at -20°C. DO NOT ALIQUOT

Clonality:

Polyclonal

Ig Type: Rabbit IgG

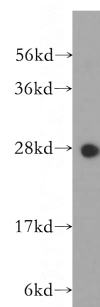
Applications

Recommended Dilution:

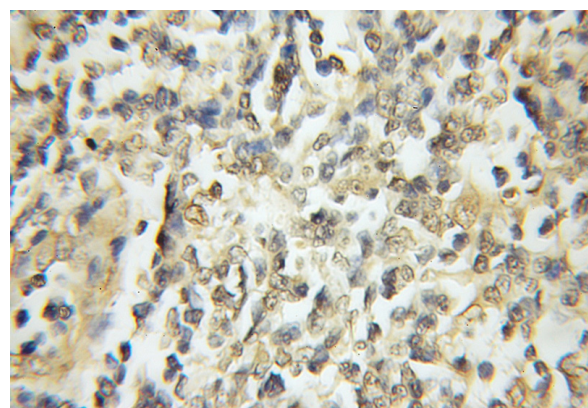
WB: 1:200-1:2000

IHC: 1:20-1:200

Validations



human lung tissue were subjected to SDS PAGE followed by western blot with Catalog No:114374(PSMA3 antibody) at dilution of 1:400



Immunohistochemical of paraffin-embedded human lymphoma using Catalog No:114374(PSMA3 antibody) at dilution of 1:50 (under 10x lens)