

PRTFDC1 antibody



Catalog Number: 114282

Product name

PRTFDC1 antibody

IP: 1:200-1:2000

IHC: 1:20-1:200

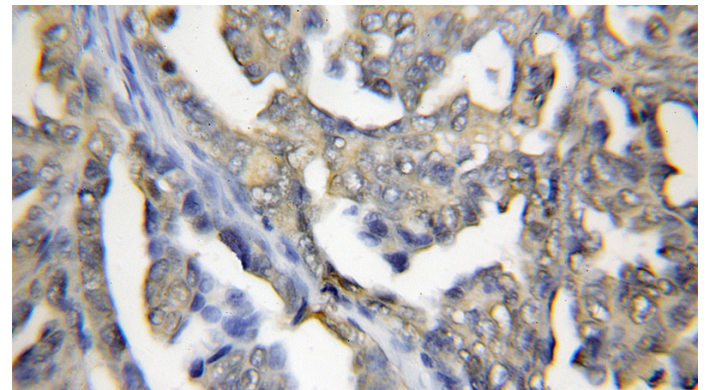
Specificity

Human; other species not tested.

Validations

Antibody description

PRTFDC1 Rabbit Polyclonal antibody. Positive IHC detected in human ovary tumor tissue. Positive IP detected in mouse brain tissue. Positive WB detected in fetal human brain tissue, human brain tissue, Y79 cells. Observed molecular weight by Western-blot: 26 kDa



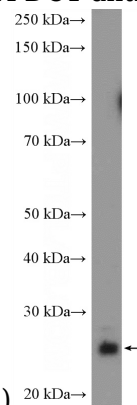
Preparation

This antibody was obtained by immunization of PRTFDC1 recombinant protein (Accession Number: NM_020200). Purification method: Antigen affinity purified.

Immunohistochemical of paraffin-embedded human ovary tumor using Catalog No:114282(PRTFDC1 antibody) at dilution of 1:50

Formulation

PBS with 0.1% sodium azide and 50% glycerol pH 7.3.



(under 10x lens)

Storage

Store at -20°C. DO NOT ALIQUOT

fetal human brain tissue were subjected to SDS PAGE followed by western blot with Catalog No:114282(PRTFDC1 Antibody) at dilution of

Clonality

Polyclonal

Ig Type

Rabbit IgG

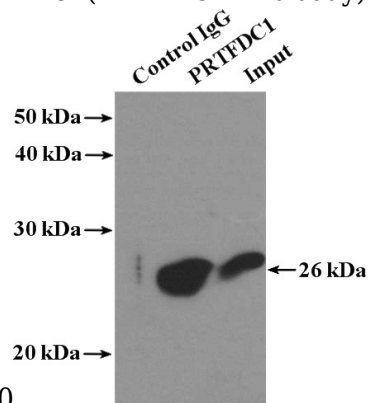
Applications

ELISA, IHC, WB, IP

Dilutions

Recommended Dilution:

WB: 1:200-1:2000



1:600

IP Result of anti-PRTFDC1 (IP:Catalog No:114282, 4ug; Detection:Catalog No:114282 1:600) with

PRTFDC1 antibody



Catalog Number: 114282

mouse brain tissue lysate 4000ug.