

PTAFR antibody

Catalog Number: 114257

Product name

PTAFR antibody

Specificity

Human; other species not tested.

Antibody description

PTAFR Rabbit Polyclonal antibody. Positive FC detected in HL-60 cells. Positive IHC detected in human lung tissue, human heart tissue.

Preparation

This antibody was obtained by immunization of PTAFR recombinant protein (Accession Number: NM_001164723). Purification method: Antigen affinity purified.

Formulation

PBS with 0.1% sodium azide and 50% glycerol pH 7.3.

Storage

Store at -20°C. DO NOT ALIQUOT

Clonality

Polyclonal

Ig Type

Rabbit IgG

Applications

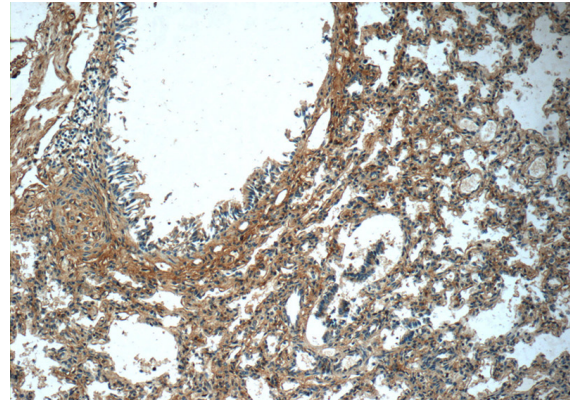
ELISA, IHC, FC

Dilutions

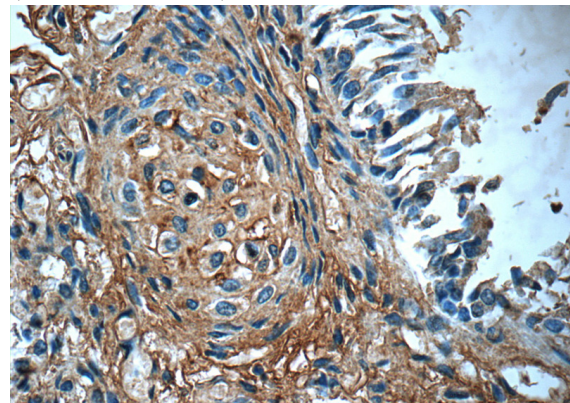
Recommended Dilution:

IHC: 1:20-1:200

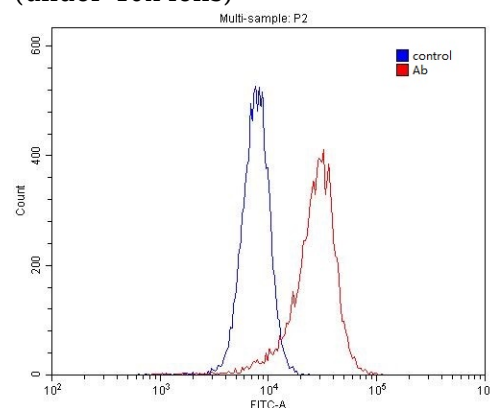
Validations



Immunohistochemistry of paraffin-embedded human lung tissue slide using Catalog No:114257(PTAFR Antibody) at dilution of 1:50 (under 10x lens)



Immunohistochemistry of paraffin-embedded human lung tissue slide using Catalog No:114257(PTAFR Antibody) at dilution of 1:50 (under 40x lens)



1X10⁶ HL-60 cells were stained with 0.2ug PTAFR antibody (Catalog No:114257, red) and control antibody (blue). Fixed with 4% PFA blocked with 3% BSA (30 min). Alexa Fluor 488-conjugated AffiniPure Goat Anti-Rabbit IgG(H+L)

PTAFR antibody



Catalog Number: 114257

with dilution 1:1500.