

PSPH antibody

Catalog Number: 114254

Product name

PSPH antibody

IP: 1:200-1:1000

IHC: 1:50-1:500

Specificity

Human, Mouse, Rat; other species not tested.

Antibody description

PSPH Rabbit Polyclonal antibody. Positive IHC detected in human spleen tissue. Positive IP detected in HL-60 cells. Positive WB detected in HL-60 cells, rat liver tissue. Observed molecular weight by Western-blot: 25-28 kDa

Preparation

This antibody was obtained by immunization of PSPH recombinant protein (Accession Number: NM_001370509). Purification method: Antigen affinity purified.

Formulation

PBS with 0.02% sodium azide and 50% glycerol pH 7.3.

Storage

Store at -20°C. DO NOT ALIQUOT

Clonality

Polyclonal

Ig Type

Rabbit IgG

Applications

ELISA, WB, IP, IHC

Dilutions

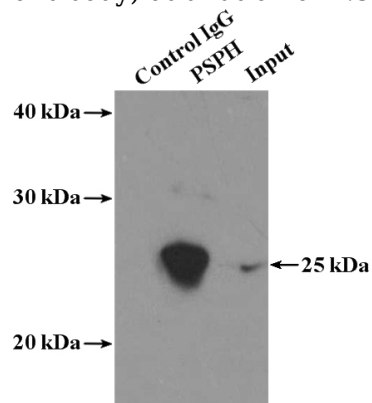
Recommended Dilution:

WB: 1:200-1:2000

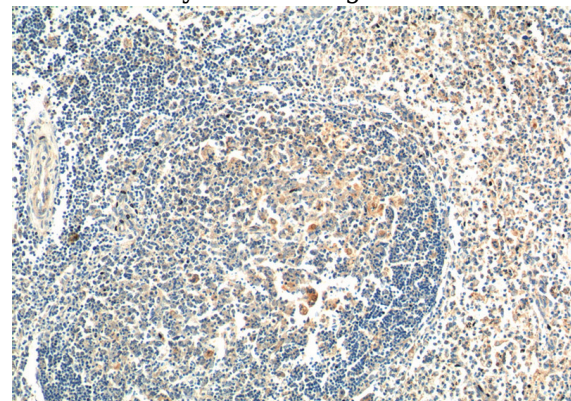
Validations



HL-60 cells were subjected to SDS PAGE followed by western blot with Catalog No:114254(PSPH antibody) at dilution of 1:300



IP Result of anti-PSPH (IP:Catalog No:114254, 4ug; Detection:Catalog No:114254 1:300) with HL-60 cells lysate 3040ug.

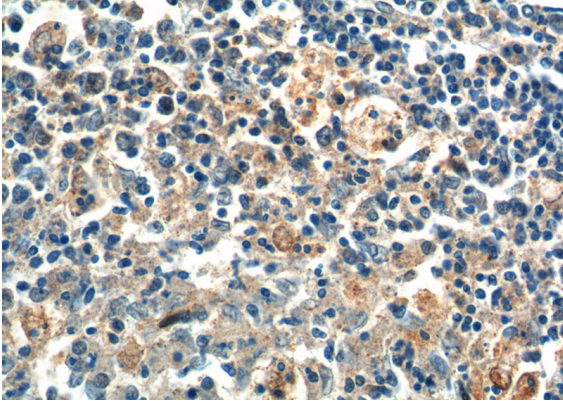


Immunohistochemistry of paraffin-embedded human spleen tissue slide using Catalog

PSPH antibody

Catalog Number: 114254

No:114254(PSPH Antibody) at dilution of 1:100
(under 10x lens).



Immunohistochemistry of paraffin-embedded
human spleen tissue slide using Catalog
No:114254(PSPH Antibody) at dilution of 1:100
(under 40x lens).