

PPP1R15B antibody



Catalog Number: 114153

Product name

PPP1R15B antibody

Specificity

Human, Mouse, Rat; other species not tested.

Antibody description

PPP1R15B Rabbit Polyclonal antibody. Positive IHC detected in human ovary tissue, human brain tissue, human kidney tissue, human lung tissue, human skin tissue, human spleen tissue, human testis tissue. Positive IF detected in HepG2 cells. Positive WB detected in SGC-7901 cells, HEK-293 cells, MCF7 cells. Positive IP detected in MCF-7 cells. Observed molecular weight by Western-blot: 100-110 kDa

Preparation

This antibody was obtained by immunization of PPP1R15B recombinant protein (Accession Number: NM_032833). Purification method: Antigen affinity purified.

Formulation

PBS with 0.02% sodium azide and 50% glycerol pH 7.3.

Storage

Store at -20°C. DO NOT ALIQUOT

Clonality

Polyclonal

Ig Type

Rabbit IgG

Applications

ELISA, WB, IHC, IF, IP

Dilutions

Recommended Dilution:

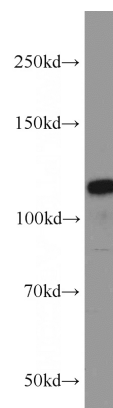
WB: 1:500-1:5000

IP: 1:500-1:5000

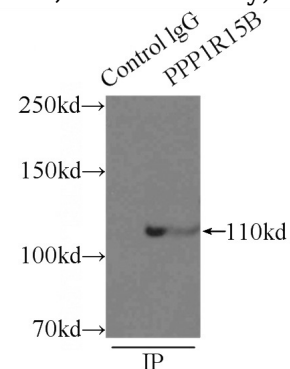
IHC: 1:20-1:200

IF: 1:20-1:200

Validations



SGC-7901 cells were subjected to SDS PAGE followed by western blot with Catalog No:114153(PPP1R15B;CReP antibody) at dilution

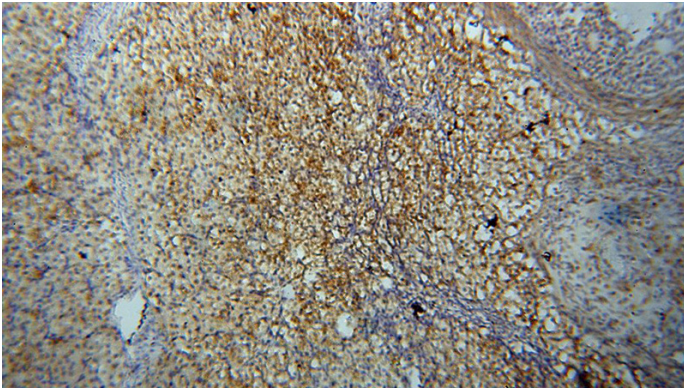


of 1:1000

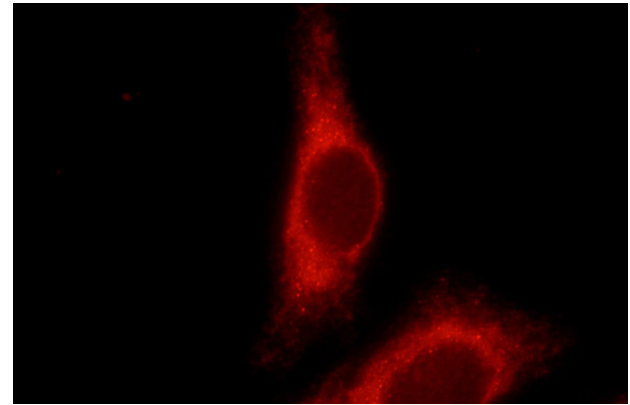
IP Result of anti-PPP1R15B;CReP (IP:Catalog No:114153, 3ug; Detection:Catalog No:114153 1:1000) with MCF-7 cells lysate 2500ug.

PPP1R15B antibody

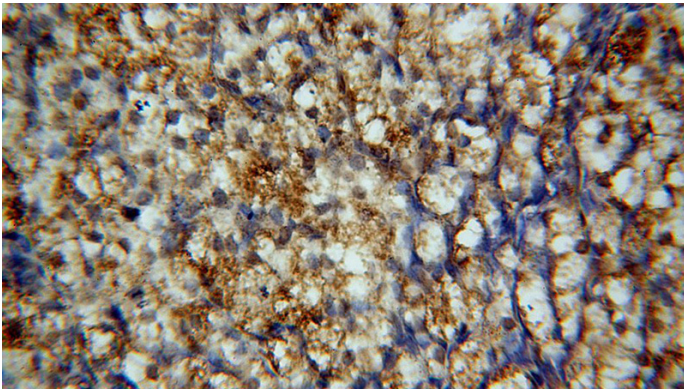
Catalog Number: 114153



Immunohistochemical of paraffin-embedded human ovary using Catalog No:114153(PPP1R15B;CReP antibody) at dilution of 1:100 (under 40x lens)



Immunohistochemical of paraffin-embedded human ovary using Catalog No:114153(PPP1R15B;CReP antibody) at dilution of 1:100 (under 10x lens)



Immunofluorescent analysis of HepG2 cells using Catalog No:114153(PPP1R15B;CReP Antibody) at dilution of 1:50 and Rhodamine-labeled goat anti-rabbit IgG .