

POLG2 antibody

Catalog Number: 114002

General Information

Product name:

POLG2 antibody

Immunogen:

Applications:

ELISA, IHC, IF, WB

Specificity:

Human, Mouse, Rat; other species not tested.

Antibody description:

POLG2 Rabbit Polyclonal antibody. Positive IF detected in COLO 320 cells. Positive IHC detected in human colon cancer tissue. Positive WB detected in COLO 320 cells, HeLa cells, mouse colon tissue, Transfected HEK-293 cells. Observed molecular weight by Western-blot: 55 kDa

Properties

Preparation:

This antibody was obtained by immunization of POLG2 recombinant protein (Accession Number: BC009194). Purification method: Antigen affinity purified.

Formulation:

PBS with 0.1% sodium azide and 50% glycerol pH 7.3.

Storage:

Store at -20°C. DO NOT ALIQUOT

Clonality:

Polyclonal

Ig Type: Rabbit IgG

Applications

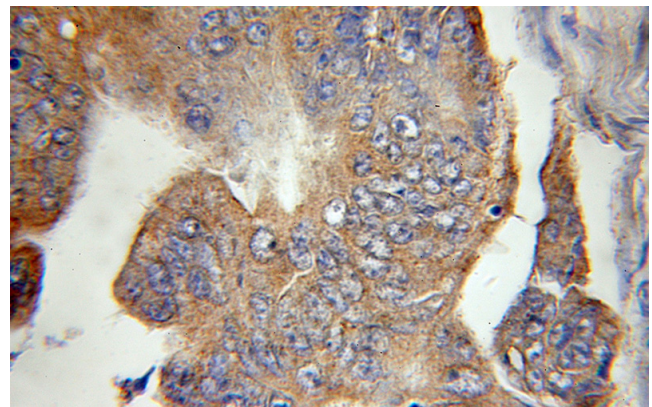
Recommended Dilution:

WB: 1:500-1:5000

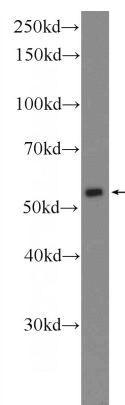
IHC: 1:20-1:200

IF: 1:10-1:100

Validations



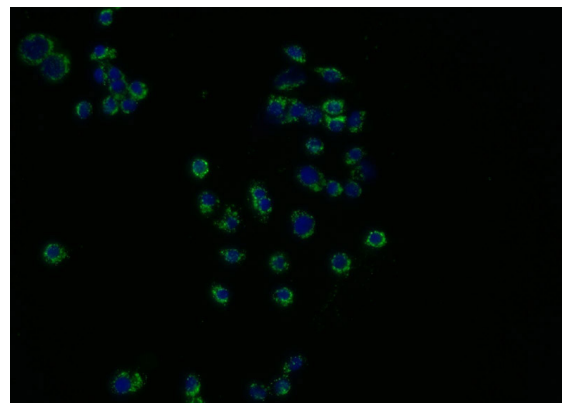
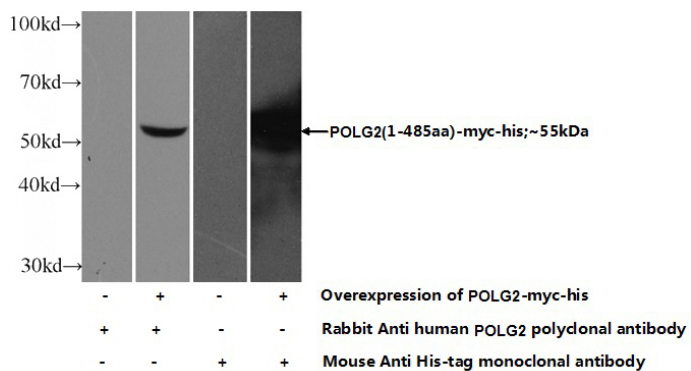
Immunohistochemical of paraffin-embedded human colon cancer using Catalog No:114002(POLG2 antibody) at dilution of 1:100 (under 10x lens)



COLO 320 cells were subjected to SDS PAGE followed by western blot with Catalog No:114002(POLG2 Antibody) at dilution of 1:1000

POLG2 antibody

Catalog Number: 114002



Transfected HEK-293 cells were subjected to SDS PAGE followed by western blot with Catalog No:114002(POLG2 Antibody) at dilution of 1:800

Immunofluorescent analysis of COLO 320 cells using Catalog No:114002(POLG2 Antibody) at dilution of 1:25 and Alexa Fluor 488-conjugated AffiniPure Goat Anti-Rabbit IgG(H+L)