

# PKC delta antibody



Catalog Number: 113849

## Product name

PKC delta antibody

## Immunogen

## Specificity

Human, Mouse, Rat; other species not tested.

## Antibody description

PKC delta Rabbit Polyclonal antibody. Positive IF detected in Hela cells. Positive IHC detected in human colon tissue. Positive IP detected in A431 cells. Positive WB detected in A431 cells, HT-1080 cells, Jurkat cells, MCF7 cells, mouse colon tissue. Observed molecular weight by Western-blot: 70 kDa

## Preparation

This antibody was obtained by immunization of PKC delta recombinant protein (Accession Number: XM\_047448564). Purification method: Antigen affinity purified.

## Formulation

PBS with 0.02% sodium azide and 50% glycerol pH 7.3.

## Storage

Store at -20°C. DO NOT ALIQUOT

## Clonality

Polyclonal

## Ig Type

Rabbit IgG

## Applications

ELISA, WB, IHC, IF, IP

## Dilutions

Recommended Dilution:

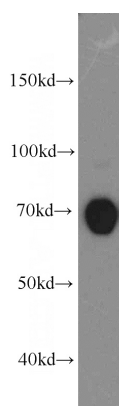
WB: 1:500-1:5000

IP: 1:200-1:2000

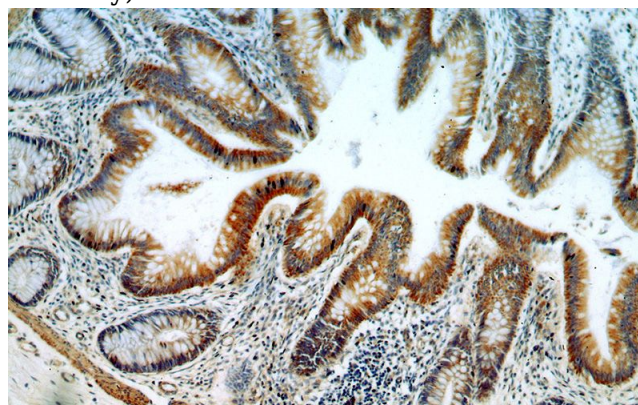
IHC: 1:20-1:200

IF: 1:10-1:100

## Validations



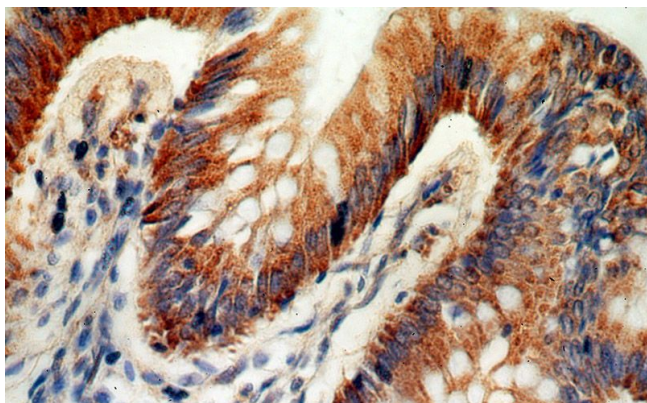
A431 cells were subjected to SDS PAGE followed by western blot with Catalog No:113849(PKC delta antibody) at dilution of 1:400



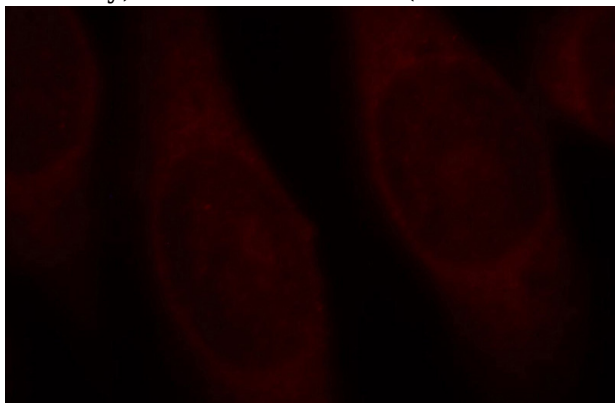
Immunohistochemical of paraffin-embedded human colon using Catalog No:113849(PKC delta antibody) at dilution of 1:100 (under 10x lens)

# PKC delta antibody

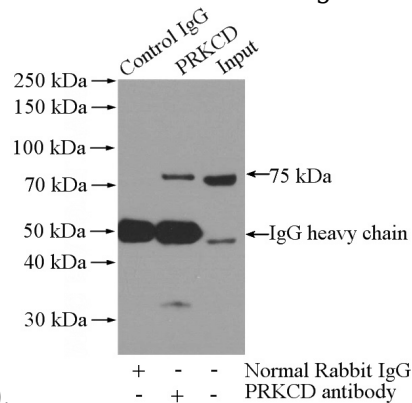
Catalog Number: 113849



Immunohistochemical of paraffin-embedded human colon using Catalog No:113849(PKC delta antibody) at dilution of 1:100 (under 40x lens)



Immunofluorescent analysis of HeLa cells, using PKC delta antibody Catalog No:113849 at 1:25 dilution and Rhodamine-labeled goat anti-rabbit



IgG (red).

IP Result of anti-PRKCD (IP:Catalog No:113849, 4ug; Detection:Catalog No:113849 1:500) with A431 cells lysate 2000ug.