

# PELI2 antibody



Catalog Number: 113704

## Product name

PELI2 antibody

IHC: 1:20-1:200

IF: 1:10-1:100

## Specificity

Human, Mouse, Rat; other species not tested.

## Antibody description

PELI2 Rabbit Polyclonal antibody. Positive IF detected in HepG2 cells. Positive IHC detected in human ovary tissue. Positive WB detected in mouse lung tissue, mouse spleen tissue, mouse testis tissue, Raji cells. Observed molecular weight by Western-blot: 45-50 kDa

## Preparation

This antibody was obtained by immunization of PELI2 recombinant protein (Accession Number: NM\_021255). Purification method: Antigen affinity purified.

## Formulation

PBS with 0.1% sodium azide and 50% glycerol pH 7.3.

## Storage

Store at -20°C. DO NOT ALIQUOT

## Clonality

Polyclonal

## Ig Type

Rabbit IgG

## Applications

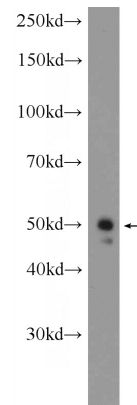
ELISA, WB, IHC, IF

## Dilutions

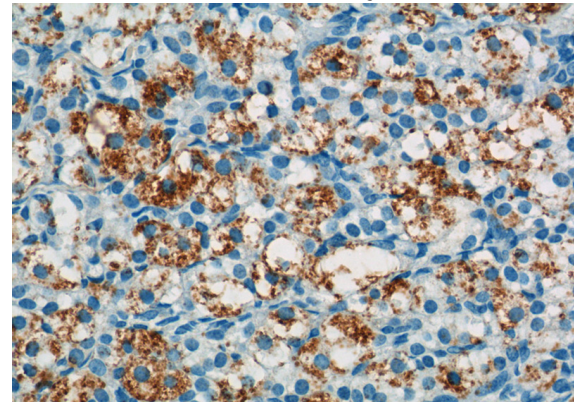
Recommended Dilution:

WB: 1:200-1:2000

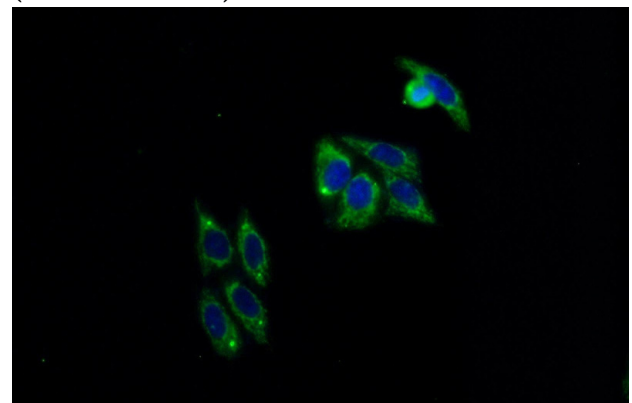
## Validations



mouse lung tissue were subjected to SDS PAGE followed by western blot with Catalog No:113704(PELI2 Antibody) at dilution of 1:600



Immunohistochemistry of paraffin-embedded human ovary tissue slide using Catalog No:113704(PELI2 Antibody) at dilution of 1:50 (under 40x lens)



Immunofluorescent analysis of HepG2 cells using

# PELI2 antibody



Catalog Number: 113704

---

Catalog No:113704(PELI2 Antibody) at dilution of 1:25 and Alexa Fluor 488-conjugated AffiniPure Goat Anti-Rabbit IgG(H+L)