

PBX3 antibody

Catalog Number: 113615

Product name

PBX3 antibody

IP: 1:200-1:2000

IHC: 1:20-1:200

Specificity

Human, Mouse, Rat; other species not tested.

Antibody description

PBX3 Rabbit Polyclonal antibody. Positive IP detected in HL-60 cells. Positive WB detected in human lung tissue. Positive IHC detected in human lung cancer tissue. Observed molecular weight by Western-blot: 47 kDa

Preparation

This antibody was obtained by immunization of PBX3 recombinant protein (Accession Number: BC016977). Purification method: Antigen affinity purified.

Formulation

PBS with 0.1% sodium azide and 50% glycerol pH 7.3.

Storage

Store at -20°C. DO NOT ALIQUOT

Clonality

Polyclonal

Ig Type

Rabbit IgG

Applications

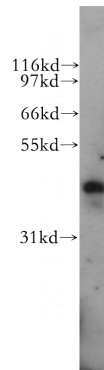
ELISA, WB, IHC, IP

Dilutions

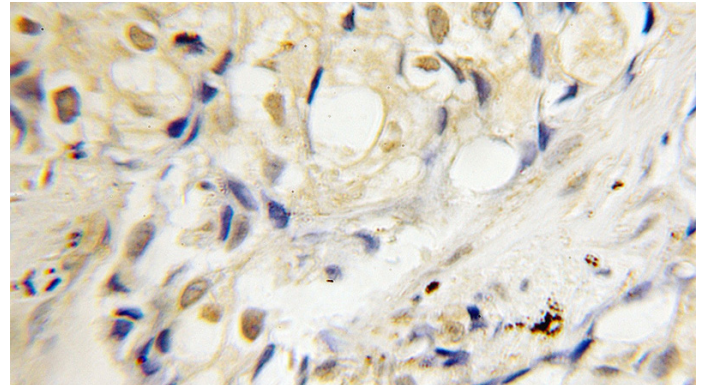
Recommended Dilution:

WB: 1:200-1:2000

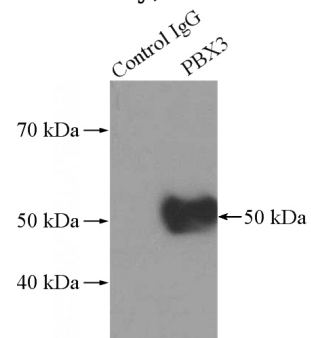
Validations



human lung tissue were subjected to SDS PAGE followed by western blot with Catalog No:113615(PBX3 antibody) at dilution of 1:500



Immunohistochemical of paraffin-embedded human lung cancer using Catalog No:113615(PBX3 antibody) at dilution of 1:50



(under 10x lens)

+ - Normal Rabbit IgG
- + PBX3 Antibody

IP Result of anti-PBX3 (IP:Catalog No:113615, 4ug; Detection:Catalog No:113615 1:500) with

PBX3 antibody



Catalog Number: 113615

HL-60 cells lysate 3040ug.