

Paxillin antibody

Catalog Number: 113610

Product name

Paxillin antibody

WB: 1:200-1:1000

IHC: 1:20-1:200

Immunogen

IF: 1:20-1:200

Specificity

Human, Dog, Mouse; other species not tested.

Antibody description

Paxillin Rabbit Polyclonal antibody. Positive WB detected in RAW 264.7 cells. Positive IF detected in MDCK cells. Positive IHC detected in human breast cancer tissue, human stomach cancer tissue.

Preparation

This antibody was obtained by immunization of Paxillin recombinant protein (Accession Number: NM_002859). Purification method: Antigen affinity purified.

Formulation

PBS with 0.02% sodium azide and 50% glycerol pH 7.3.

Storage

Store at -20°C. DO NOT ALIQUOT

Clonality

Polyclonal

Ig Type

Rabbit IgG

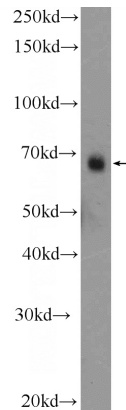
Applications

ELISA, IF, IHC, WB

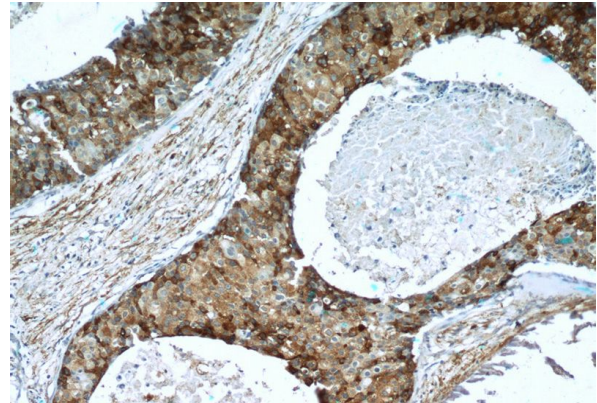
Dilutions

Recommended Dilution:

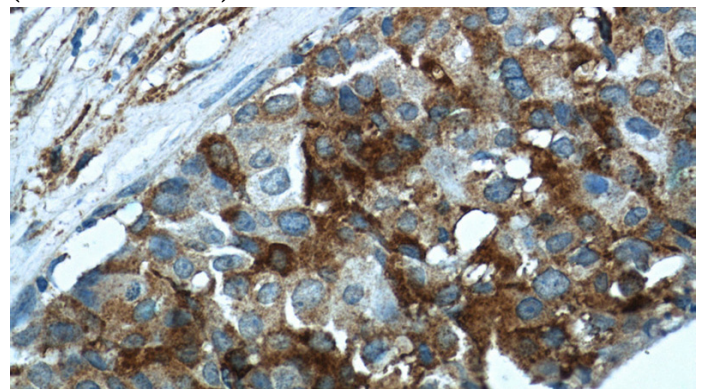
Validations



RAW 264.7 cells were subjected to SDS PAGE followed by western blot with Catalog No:113610(PXN Antibody) at dilution of 1:300



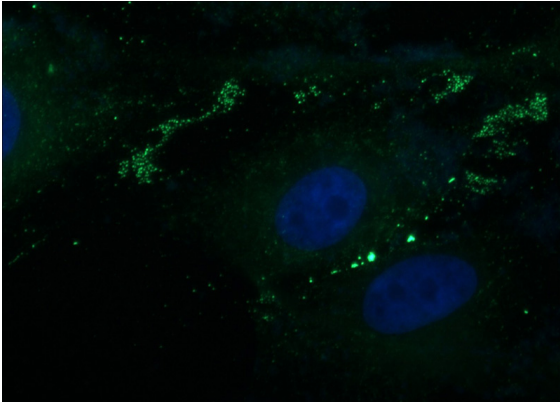
Immunohistochemistry of paraffin-embedded human breast cancer tissue slide using Catalog No:113610(PXN Antibody) at dilution of 1:50 (under 10x lens)



Paxillin antibody

Catalog Number: 113610

Immunohistochemistry of paraffin-embedded human breast cancer tissue slide using Catalog No:113610(PXN Antibody) at dilution of 1:50 (under 40x lens)



Immunofluorescent analysis of MDCK cells using Catalog No:113610(PXN Antibody) at dilution of 1:50 and Alexa Fluor 488-conjugated AffiniPure Goat Anti-Rabbit IgG(H+L)