

# P62/SQSTM1 antibody



Catalog Number: 113556

## Product name

P62/SQSTM1 antibody

IHC: 1:20-1:200

IF: 1:20-1:200

## Specificity

Human, Mouse, Rat; other species not tested.

## Antibody description

P62/SQSTM1 Rabbit Polyclonal antibody. Positive IF detected in HepG2 cells. Positive IHC detected in human breast cancer tissue, human heart tissue. Positive WB detected in MCF7 cells, HeLa cells, HepG2 cells. Observed molecular weight by Western-blot: 60 kDa

## Preparation

This antibody was obtained by immunization of Peptide (Accession Number: NM\_003900). Purification method: Antigen affinity purified.

## Formulation

PBS with 0.02% sodium azide and 50% glycerol pH 7.3.

## Storage

Store at -20°C. DO NOT ALIQUOT

## Clonality

Polyclonal

## Ig Type

Rabbit IgG

## Applications

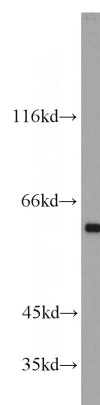
ELISA, WB, IHC, IF

## Dilutions

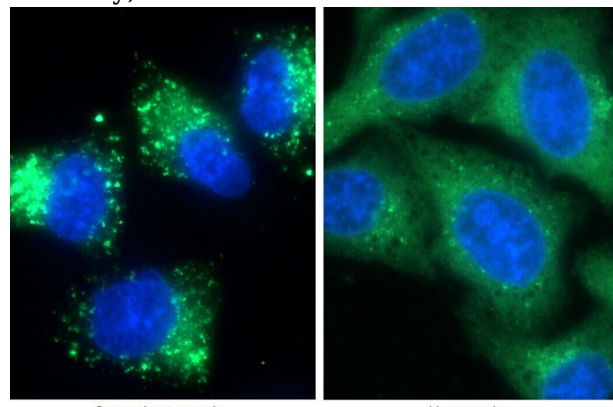
Recommended Dilution:

WB: 1:200-1:2000

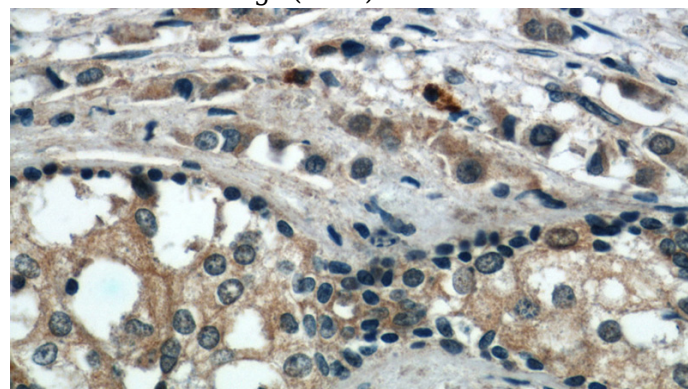
## Validations



MCF7 cells were subjected to SDS PAGE followed by western blot with Catalog No:113556(SQSTM1 antibody) at dilution of 1:500



Immunofluorescent analysis of (-20oc Ethanol) fixed HepG2 cells using Catalog No:113556(P62;SQSTM1 Antibody) at dilution of 1:100 and Alexa Fluor 488-conjugated AffiniPure Goat Anti-Rabbit IgG(H+L)



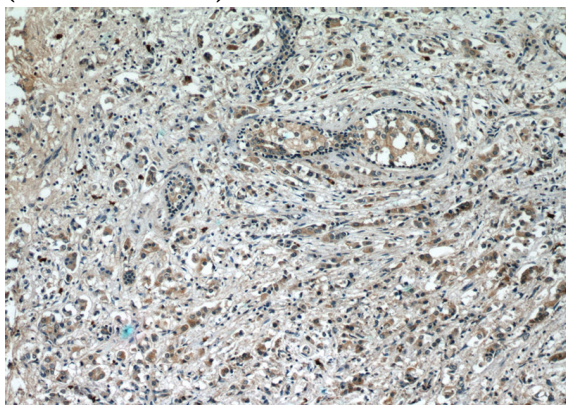
# P62/SQSTM1 antibody



Catalog Number: 113556

---

Immunohistochemical of paraffin-embedded human breast cancer using Catalog No:113556(SQSTM1 antibody) at dilution of 1:50 (under 40x lens)



Immunohistochemical of paraffin-embedded human breast cancer using Catalog No:113556(SQSTM1 antibody) at dilution of 1:50 (under 10x lens)